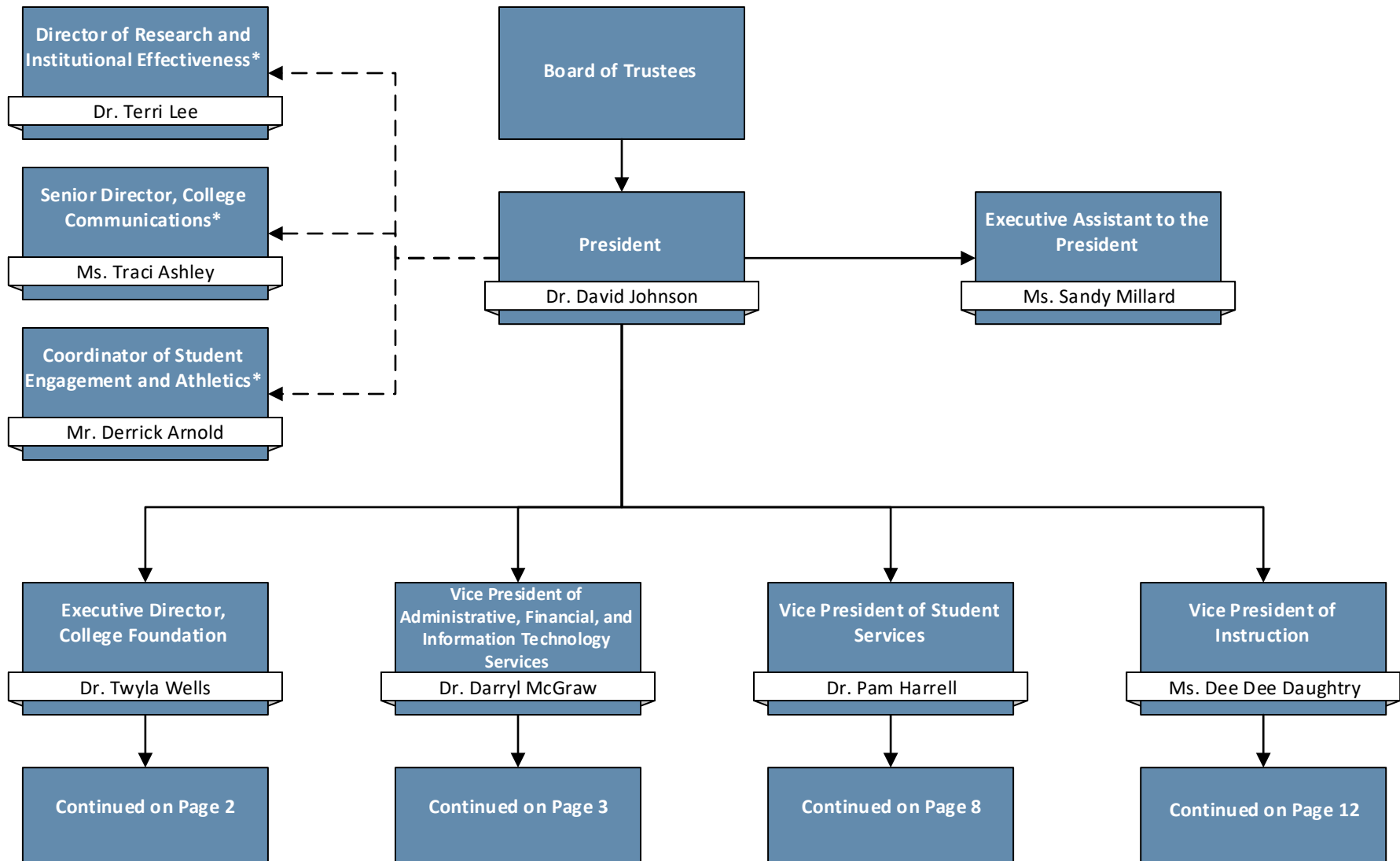




# Organizational Structure

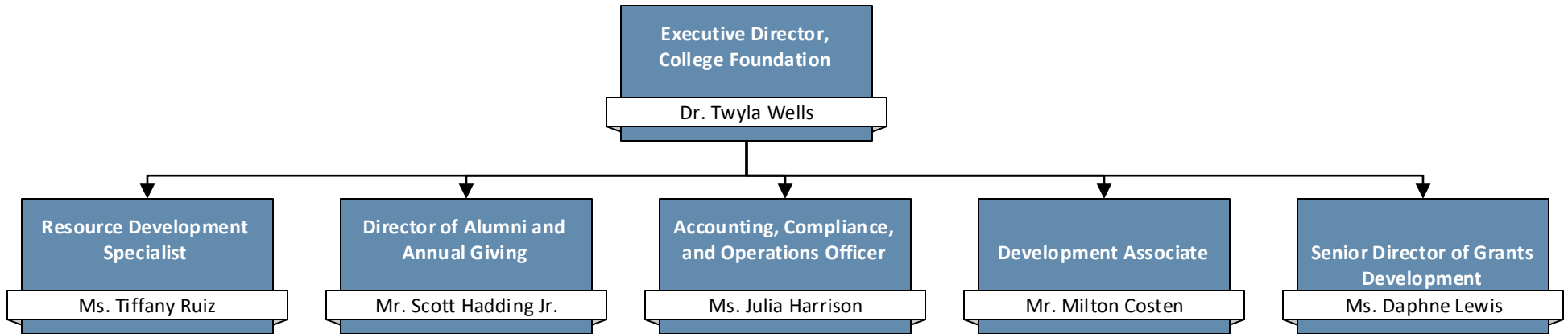
## President's Office and Vice Presidents





# Organizational Structure

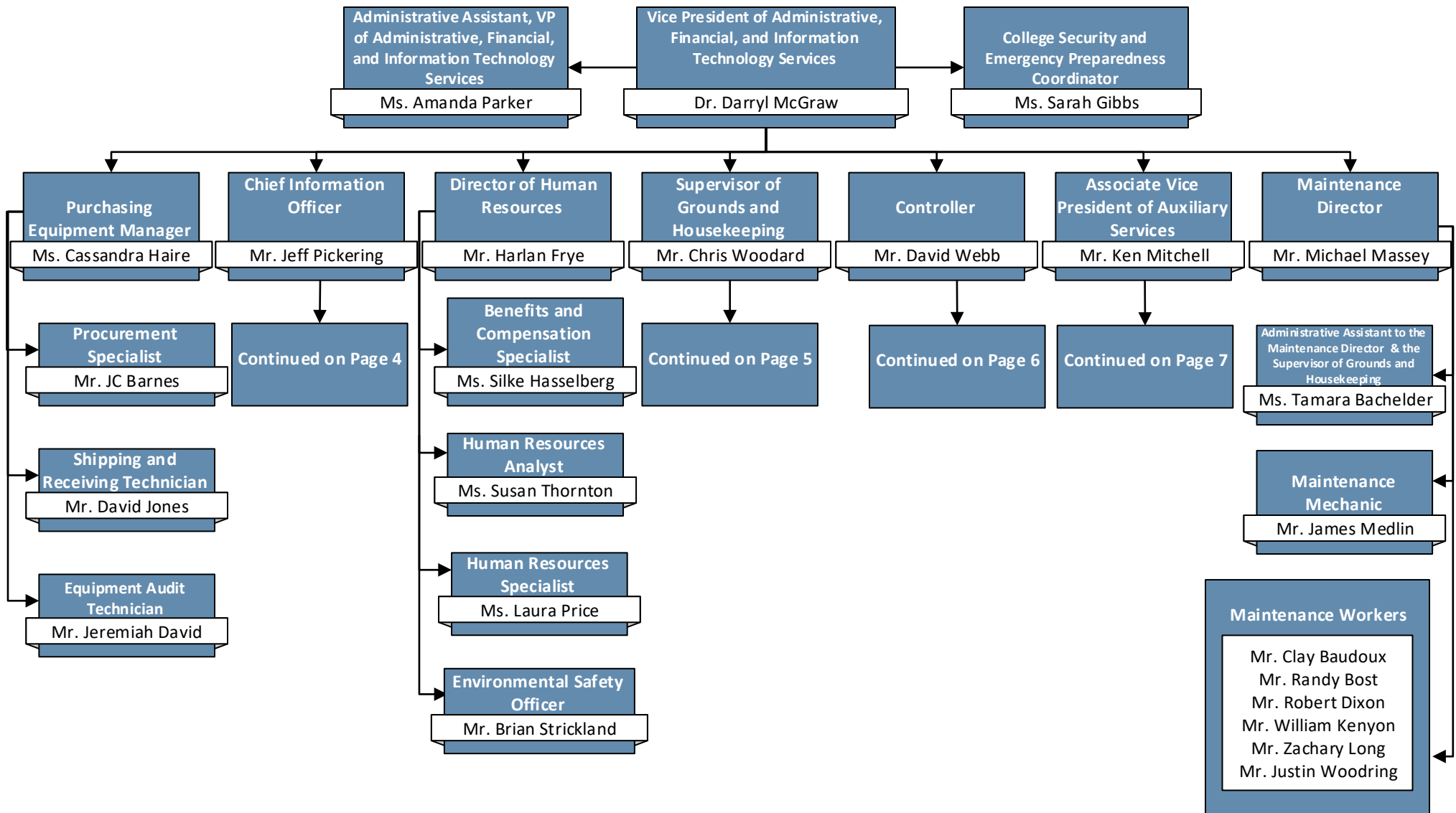
College Foundation





# Organizational Structure

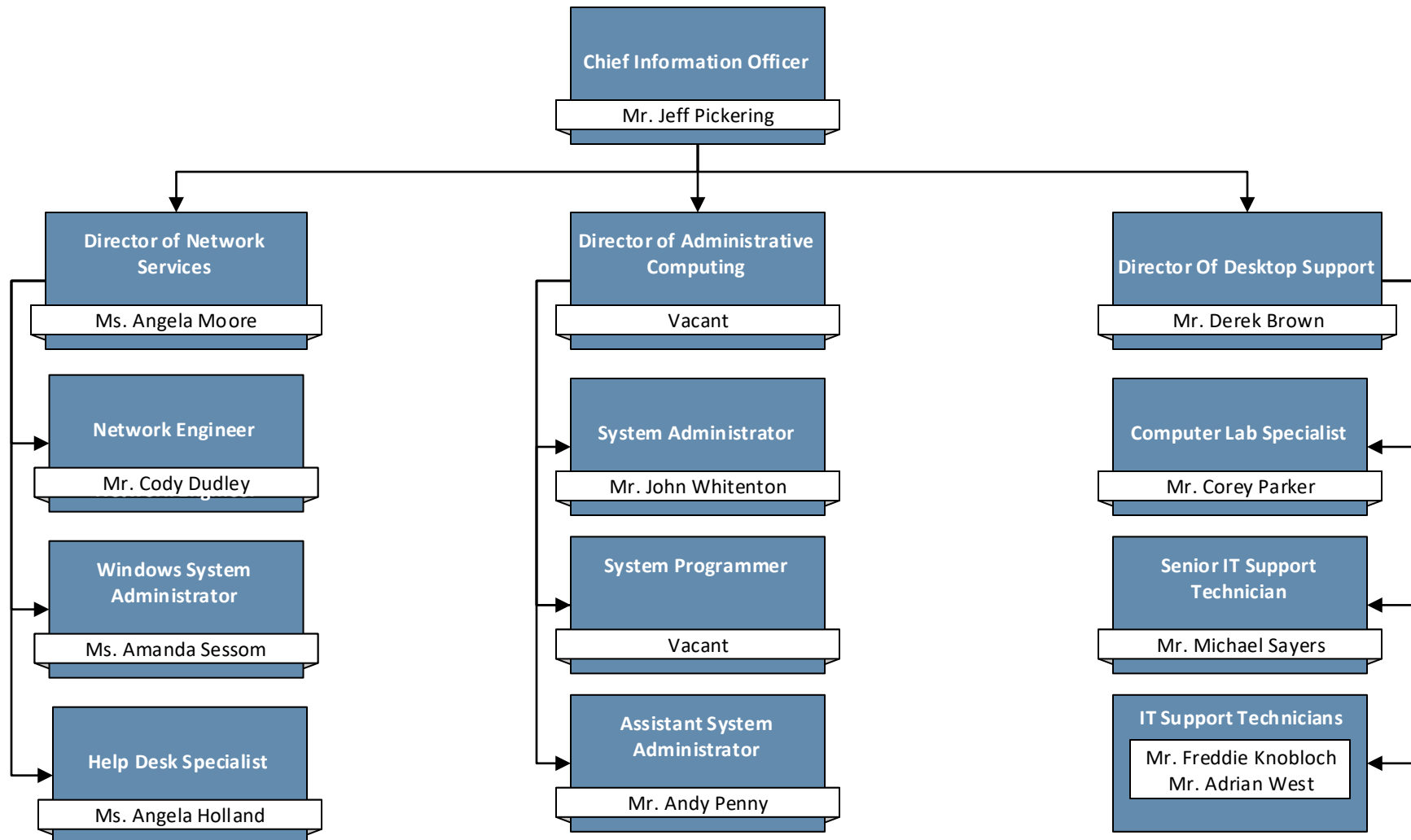
## Administrative, Financial, and Information Technology Services





# Organizational Structure

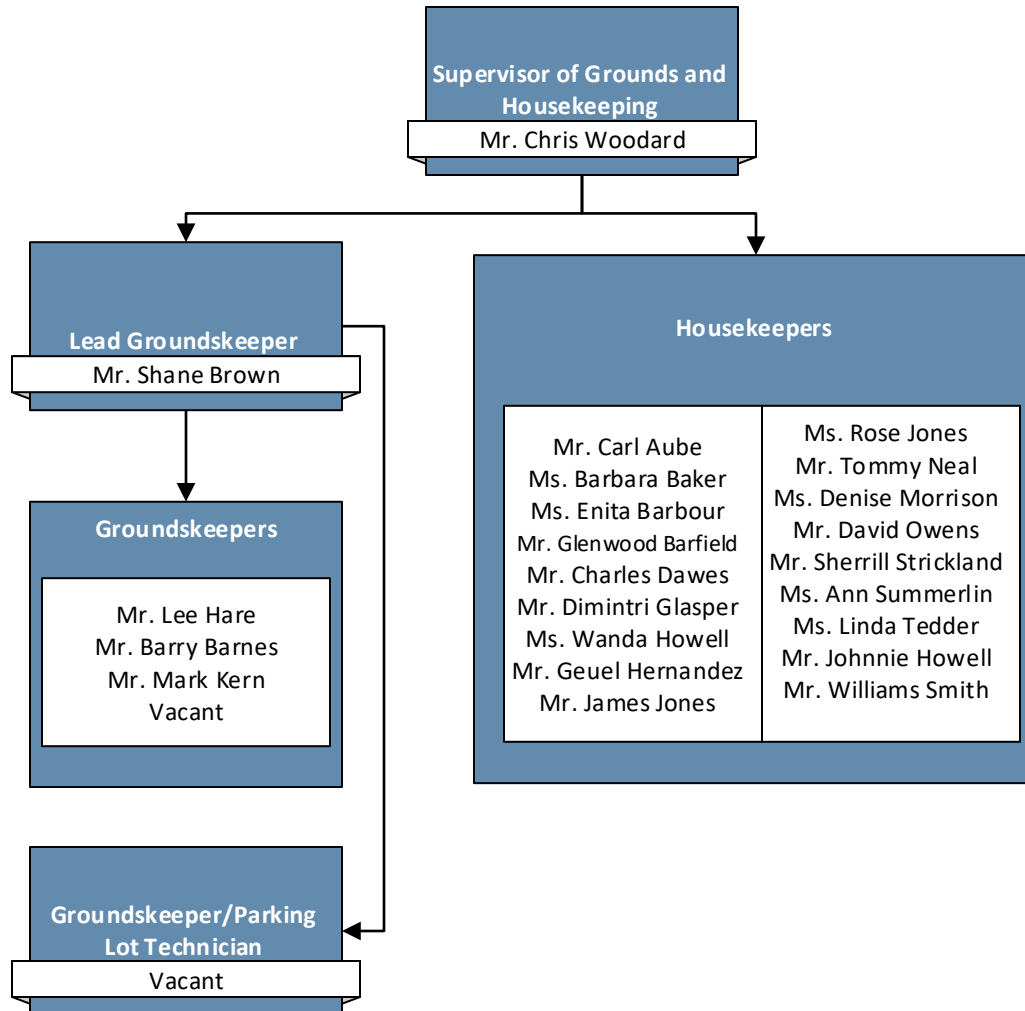
## Information Technology





# Organizational Structure

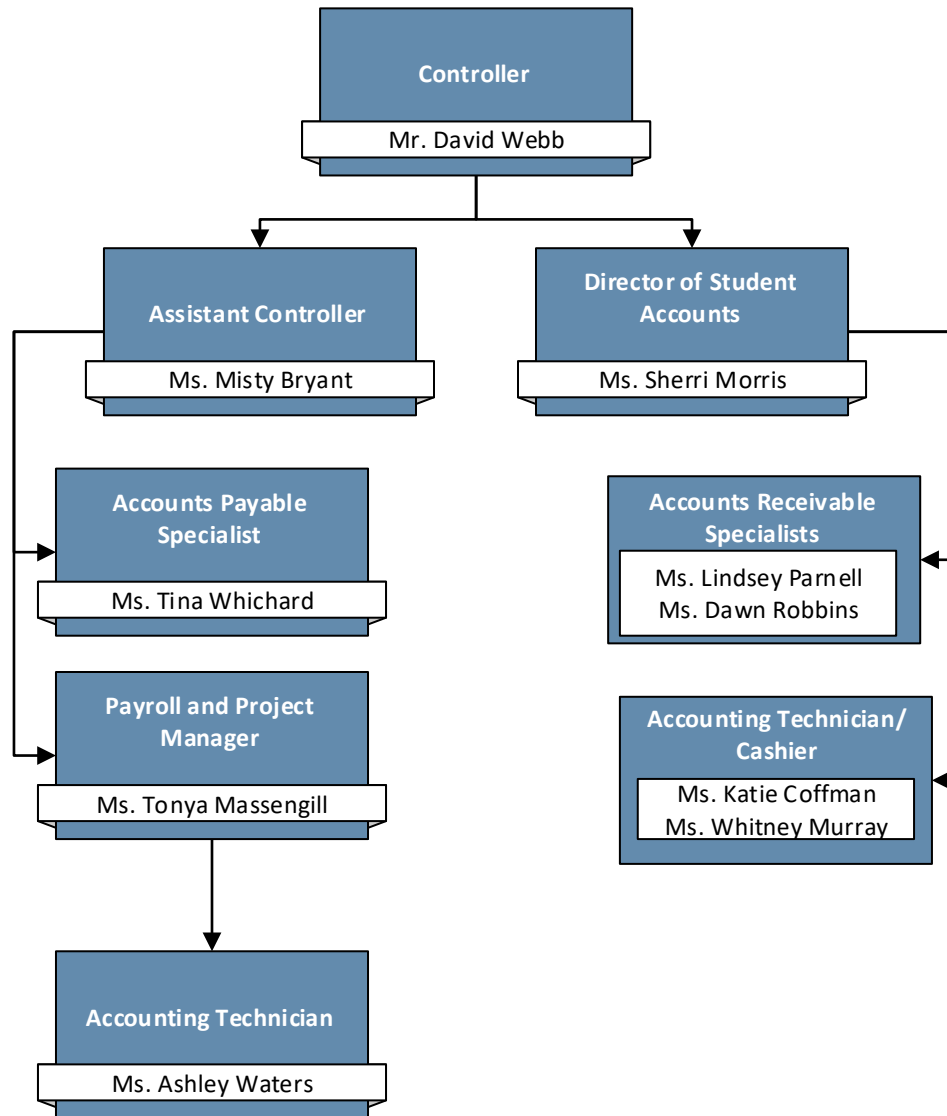
## Grounds and Housekeeping





# Organizational Structure

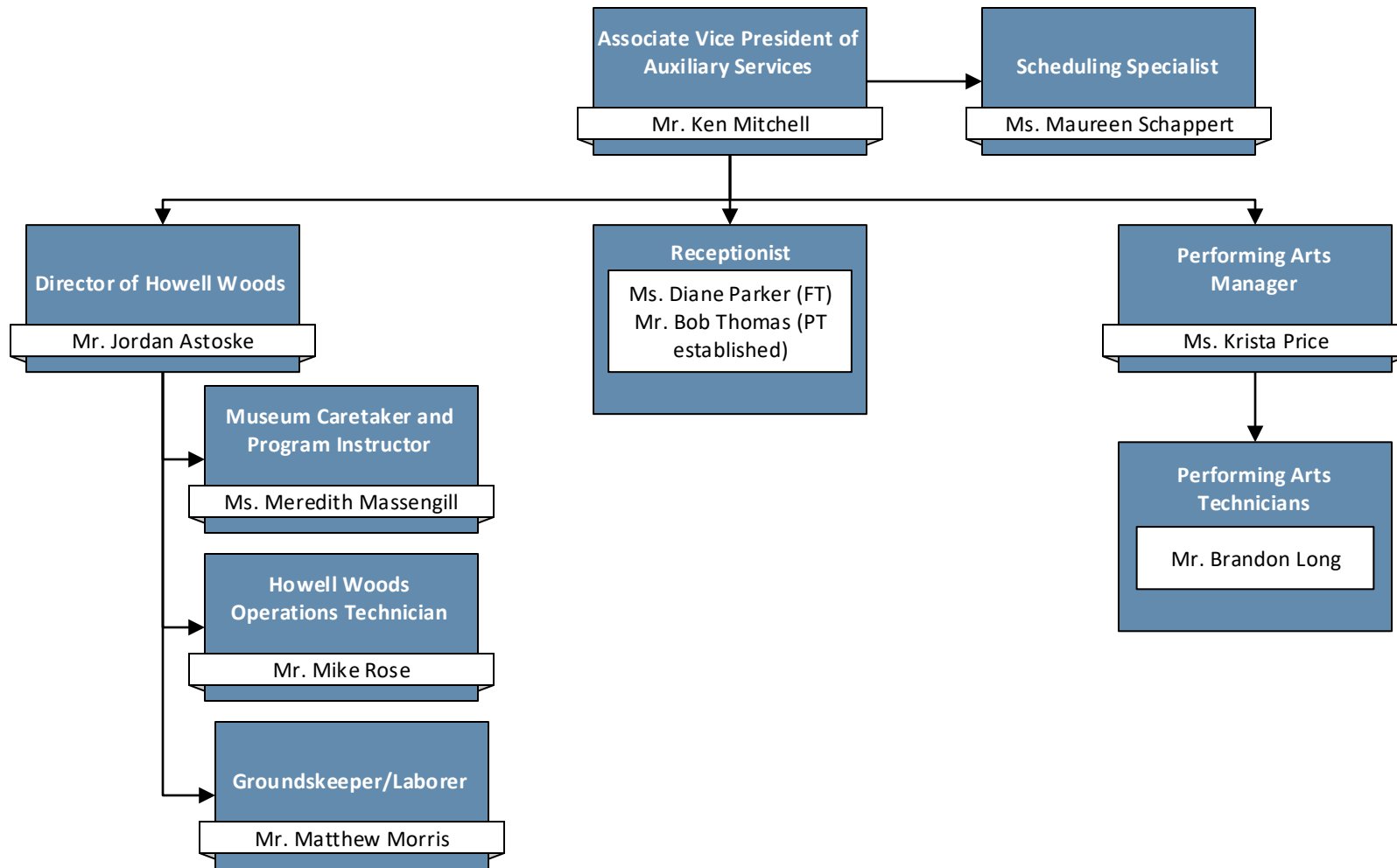
Controller





# Organizational Structure

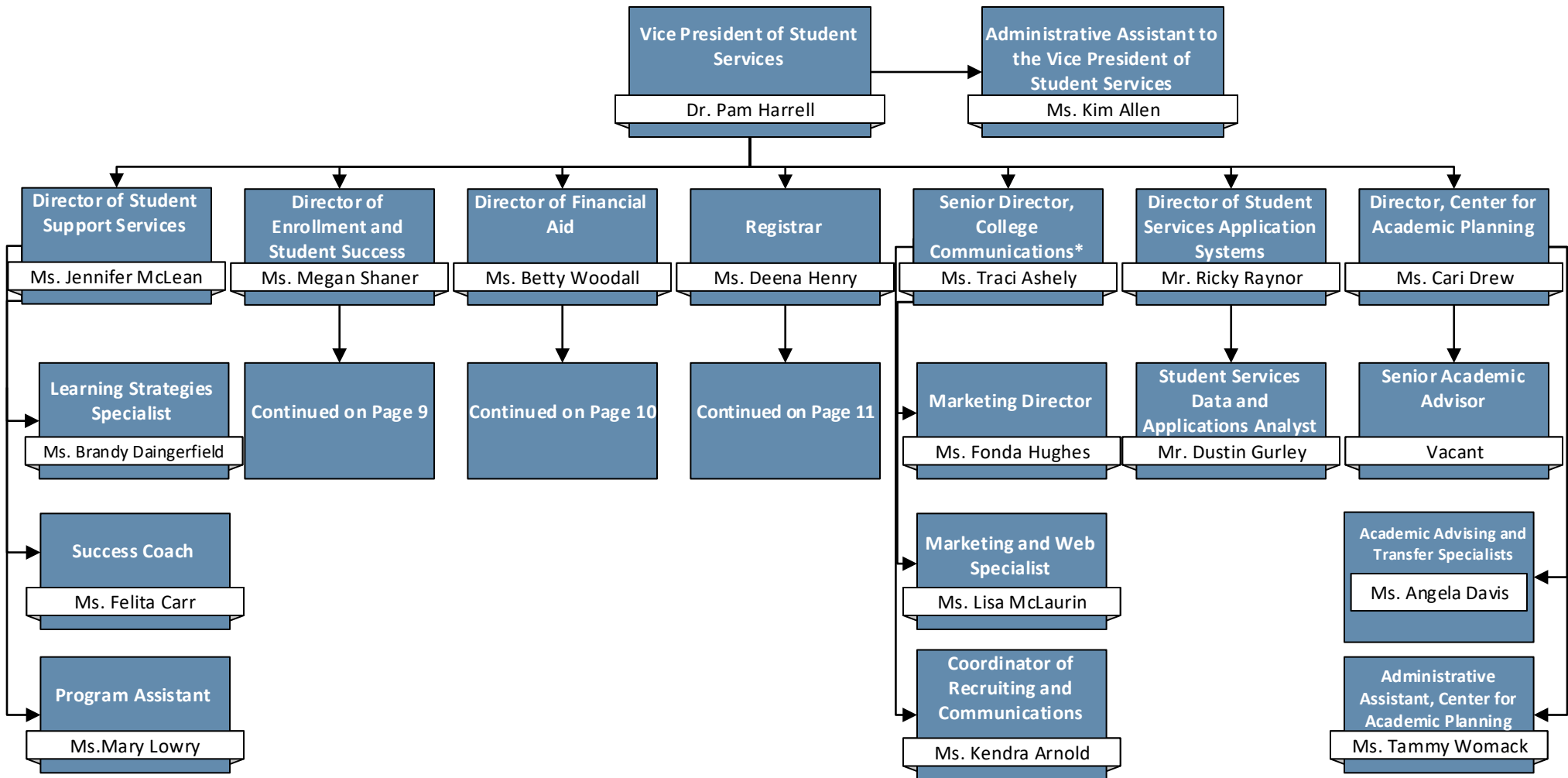
## Auxiliary Enterprises





# Organizational Structure

## Student Services

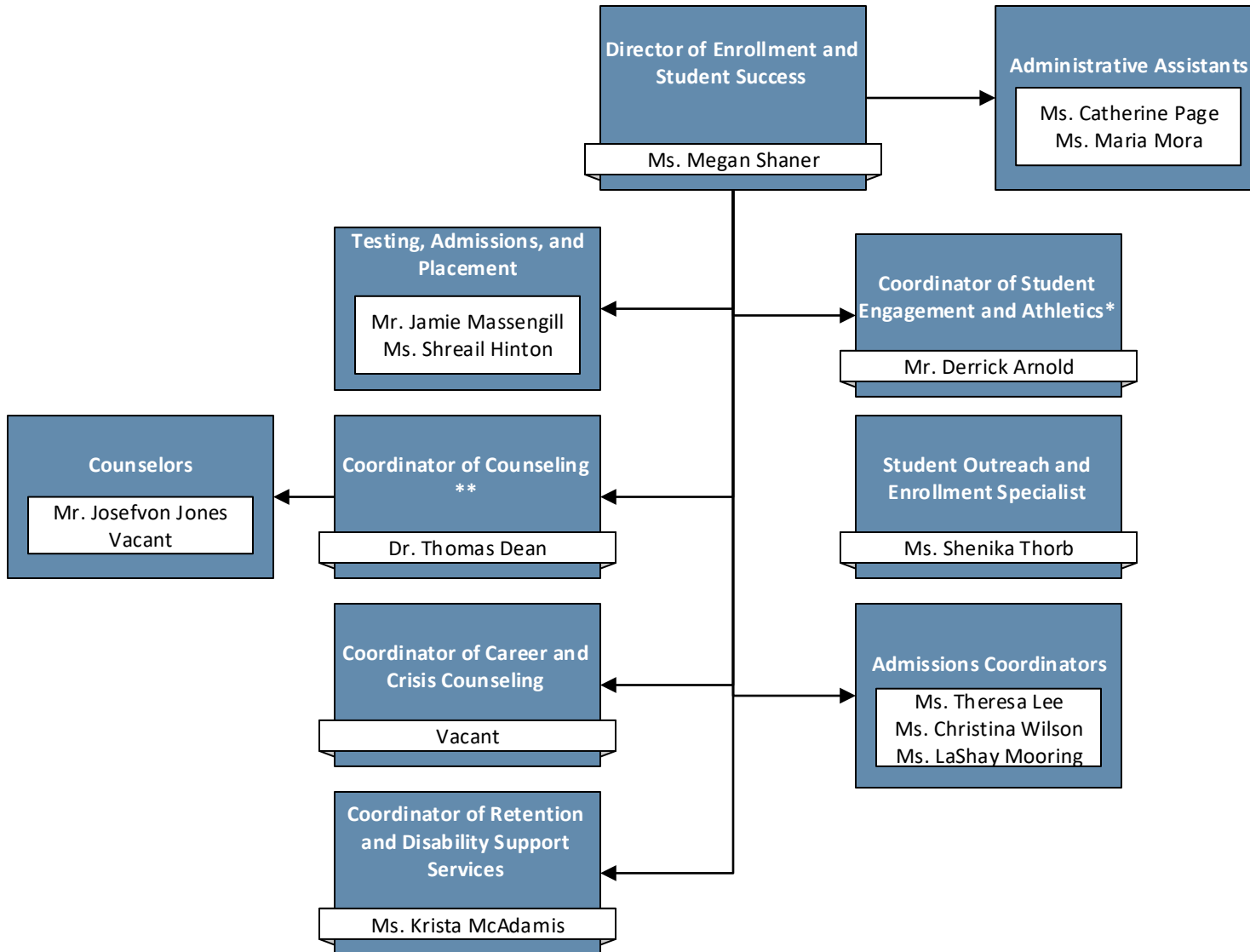






# Organizational Structure

## Enrollment and Student Success



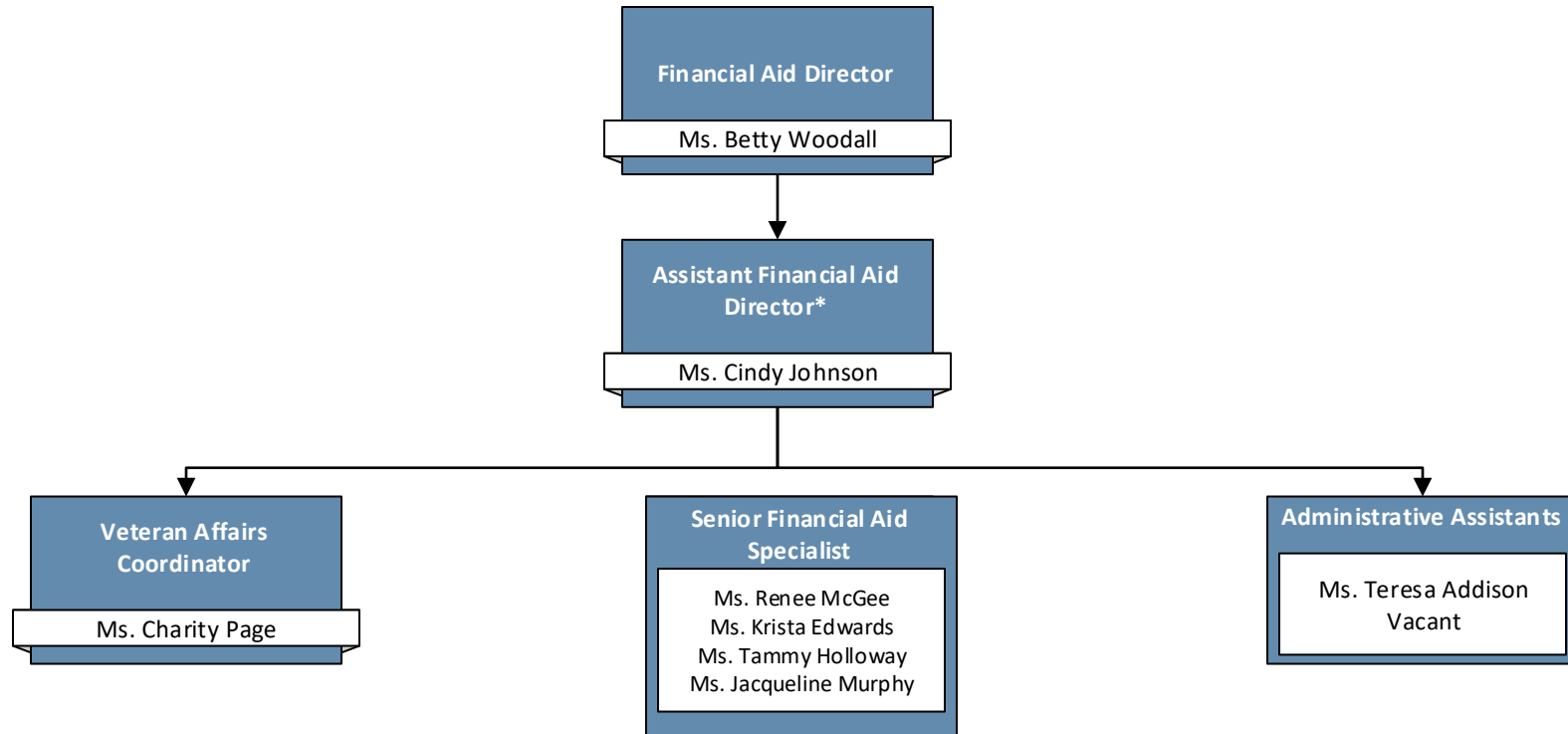
\*While this position reports directly to the director of enrollment and student success, it also maintains a direct advisory relationship with the president.

\*\*This position oversees and coordinates all counseling activities, but director of enrollment and student success maintains supervisory responsibilities over all counselors.



# Organizational Structure

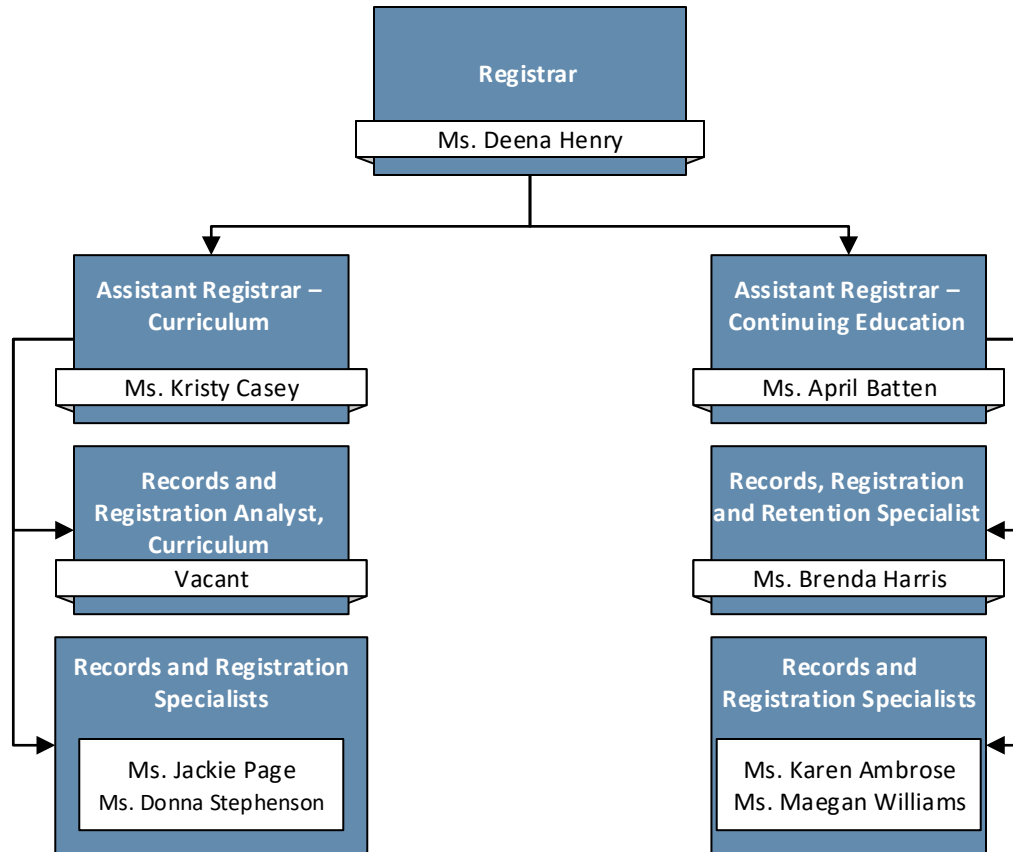
## Financial Aid





# Organizational Structure

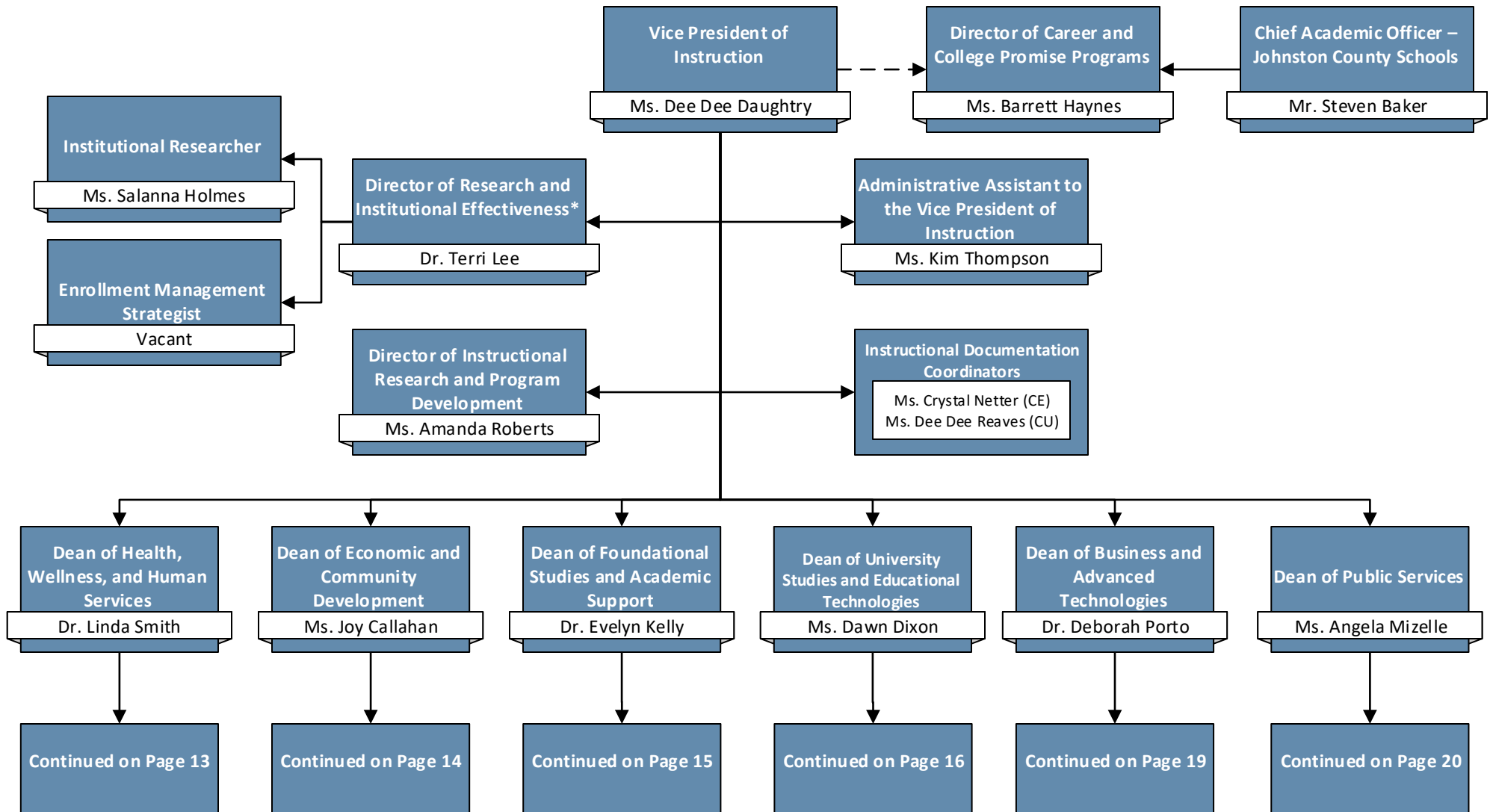
## Registrar





# Organizational Structure

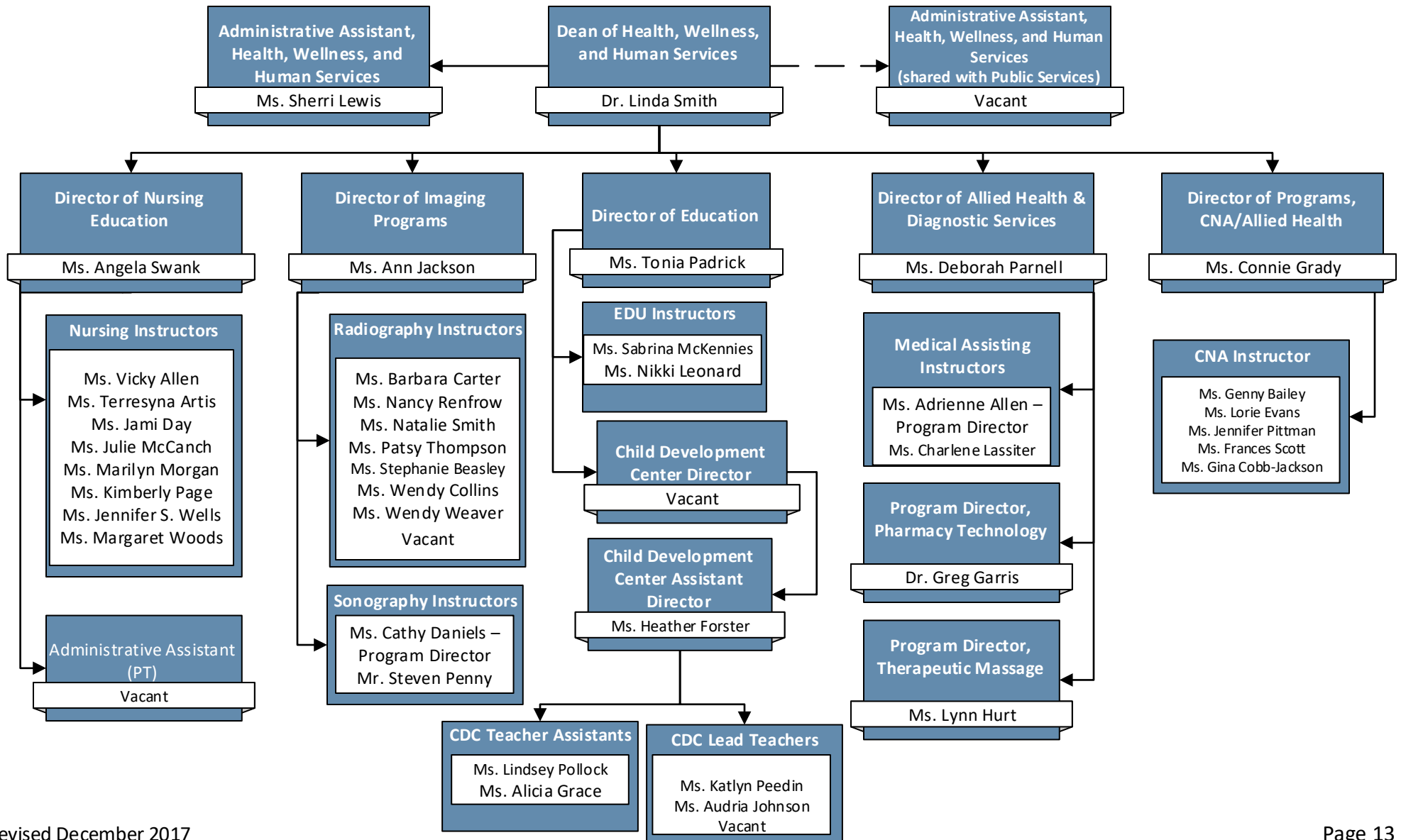
## Instruction





# Organizational Structure

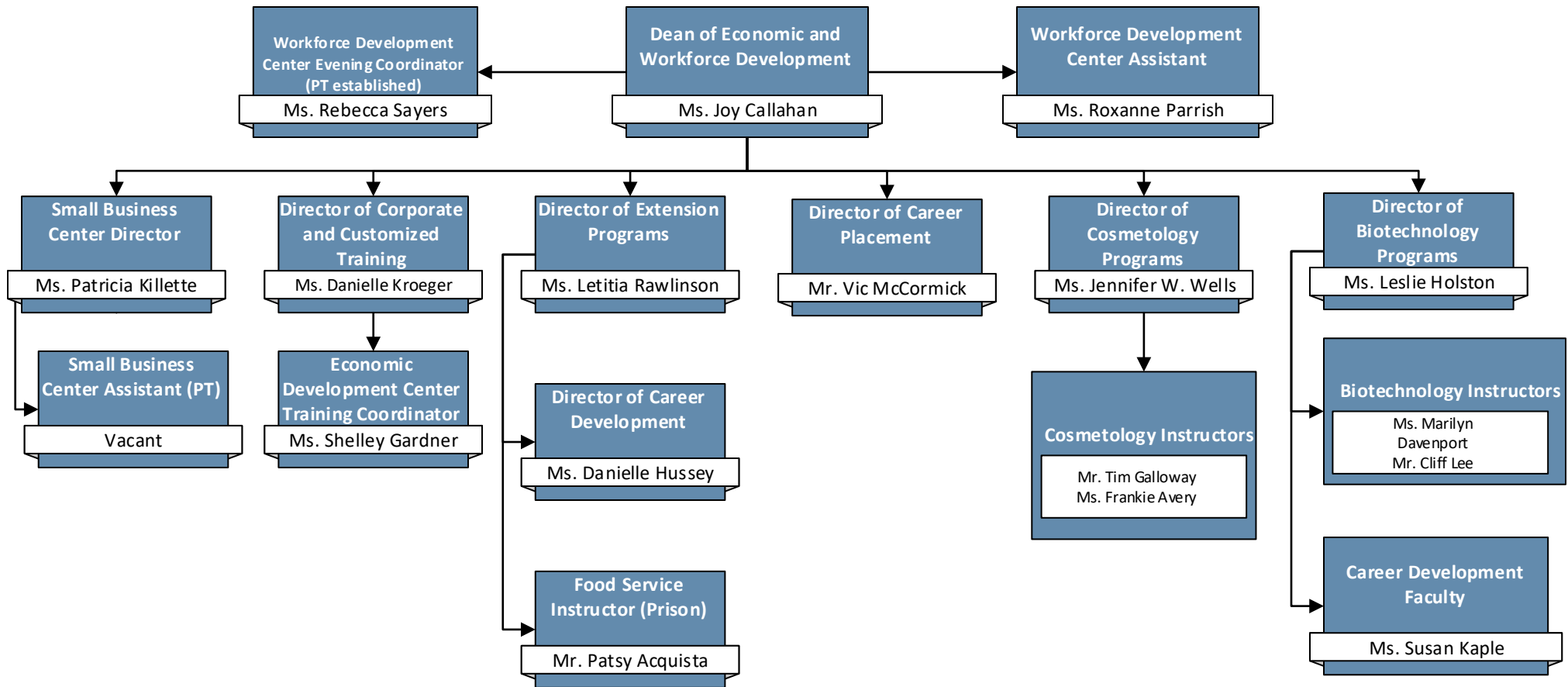
## Health, Wellness, and Human Services





# Organizational Structure

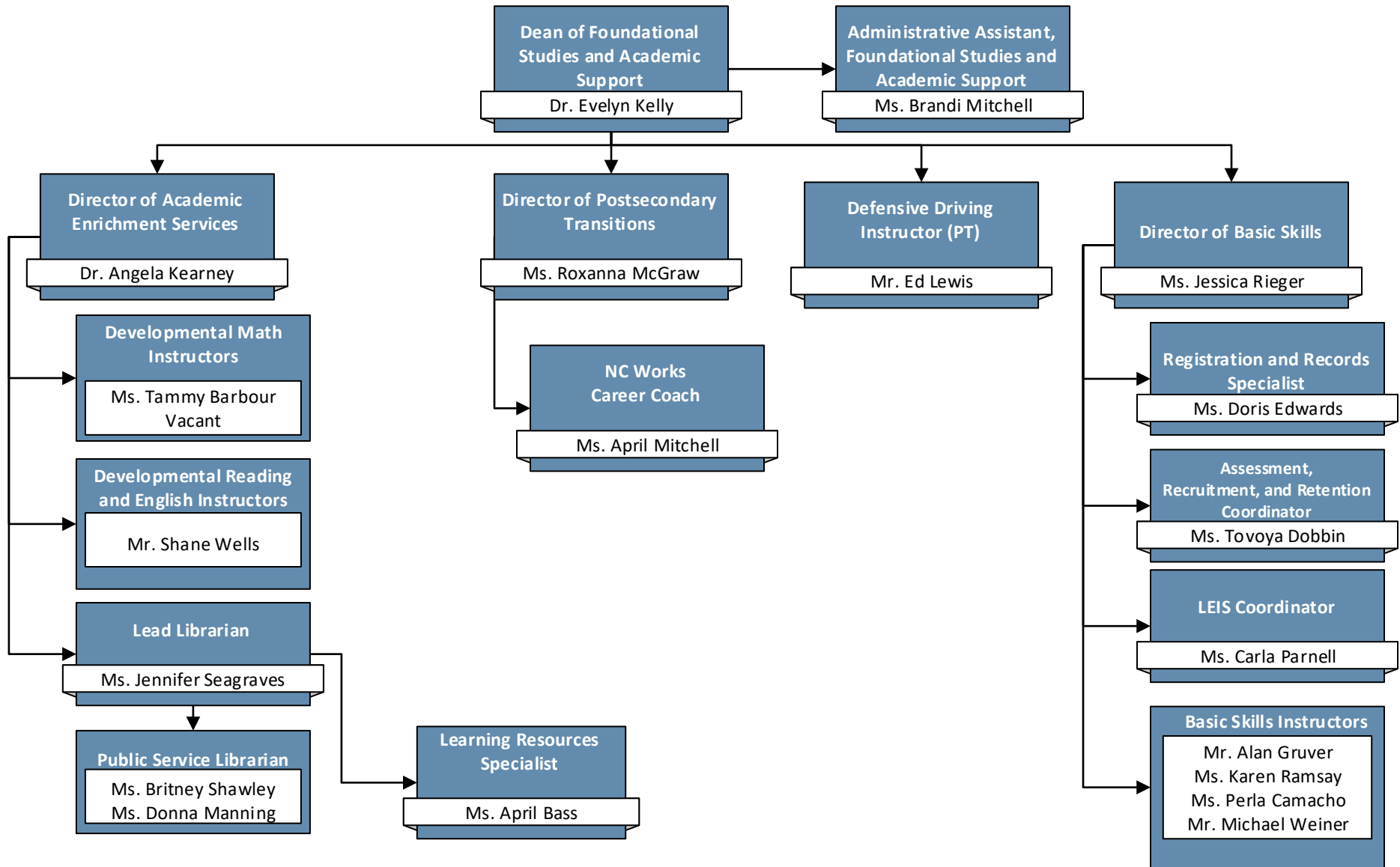
## Economic and Workforce Development





# Organizational Structure

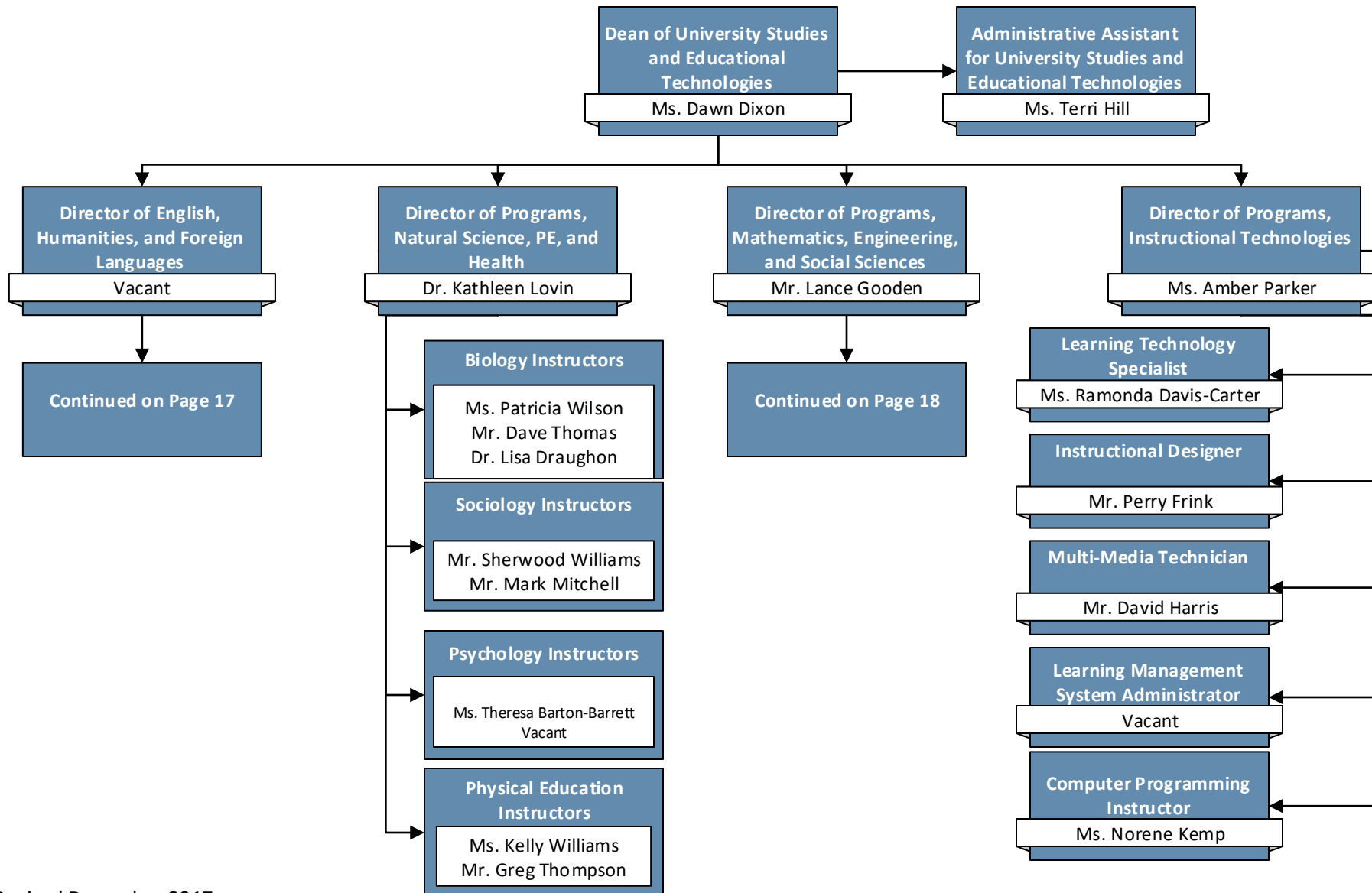
## Foundational Studies and Academic Support





# Organizational Structure

## University Studies and Educational Technologies

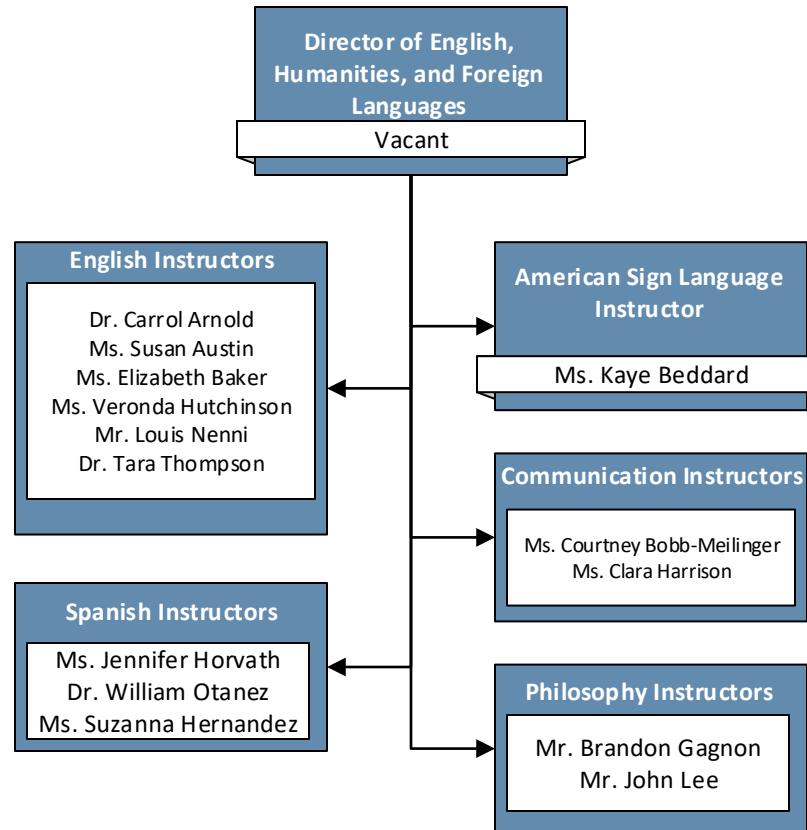






# Organizational Structure

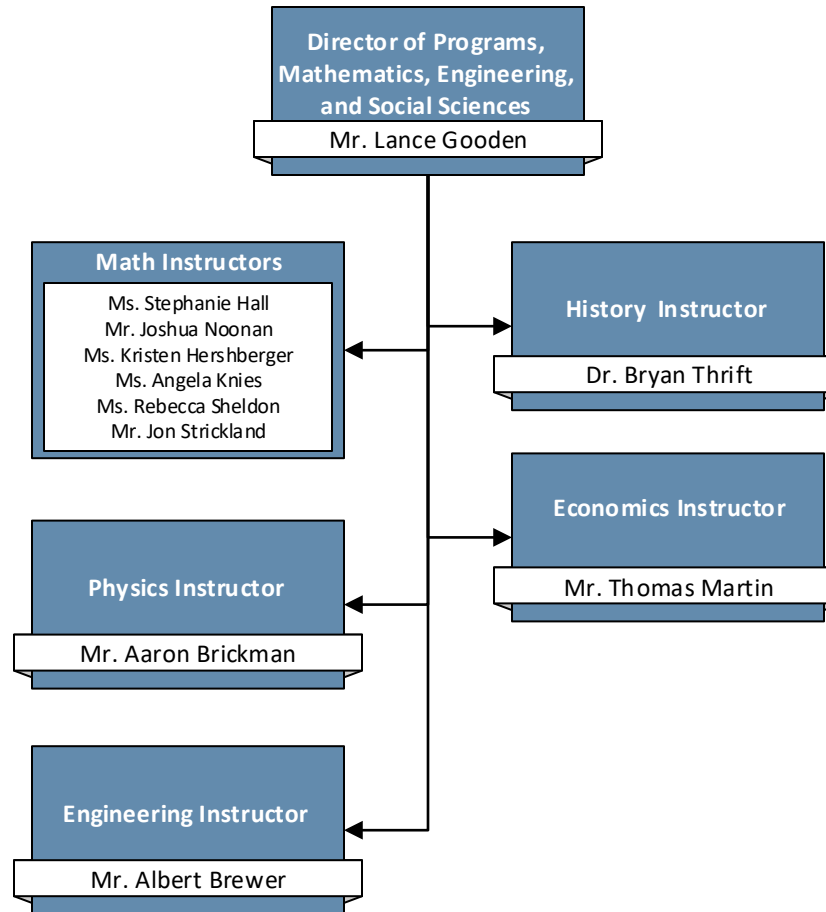
## English, Humanities, and Foreign Languages





# Organizational Structure

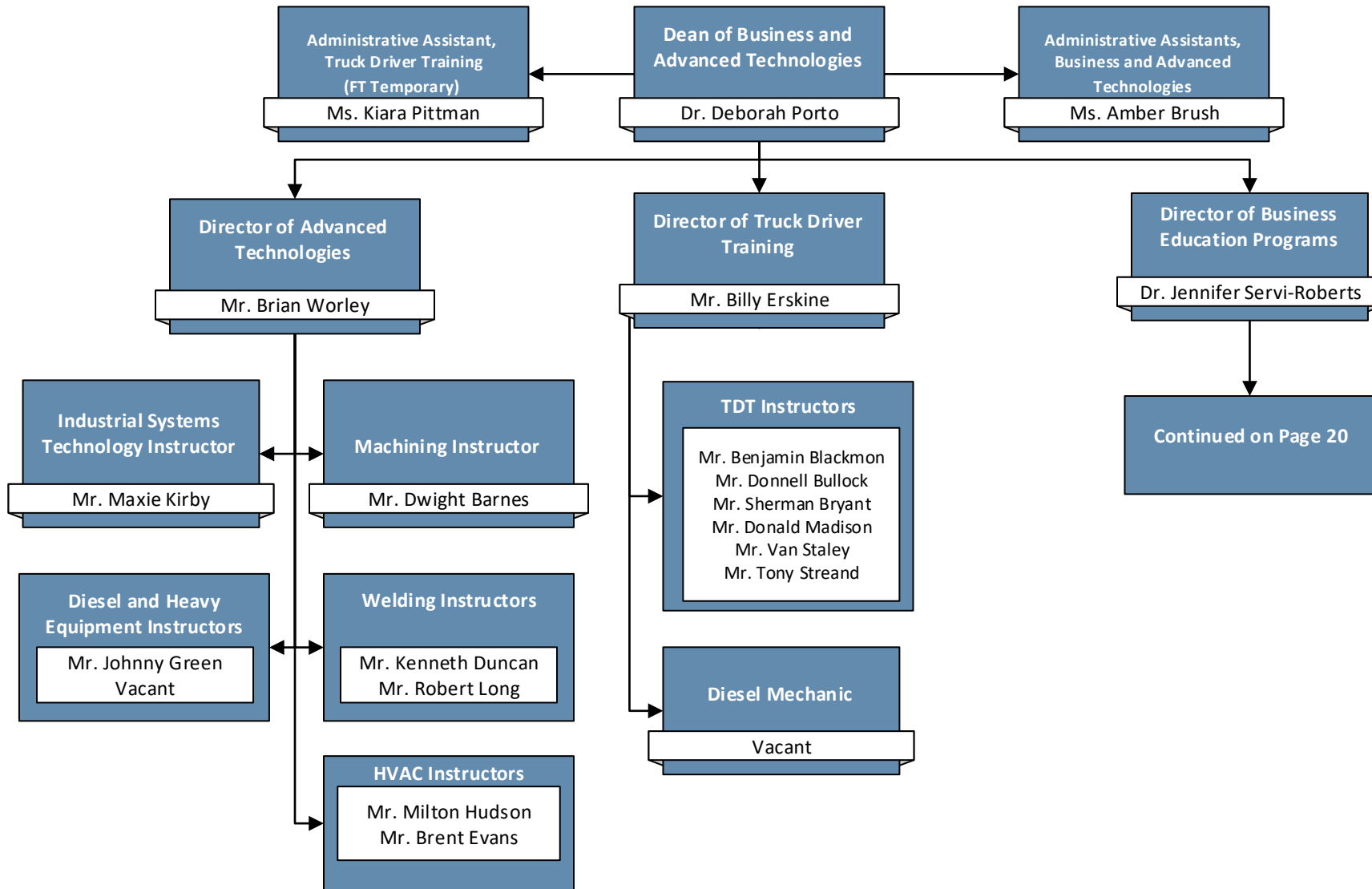
Mathematics, Engineering, and Social  
Sciences





# Organizational Structure

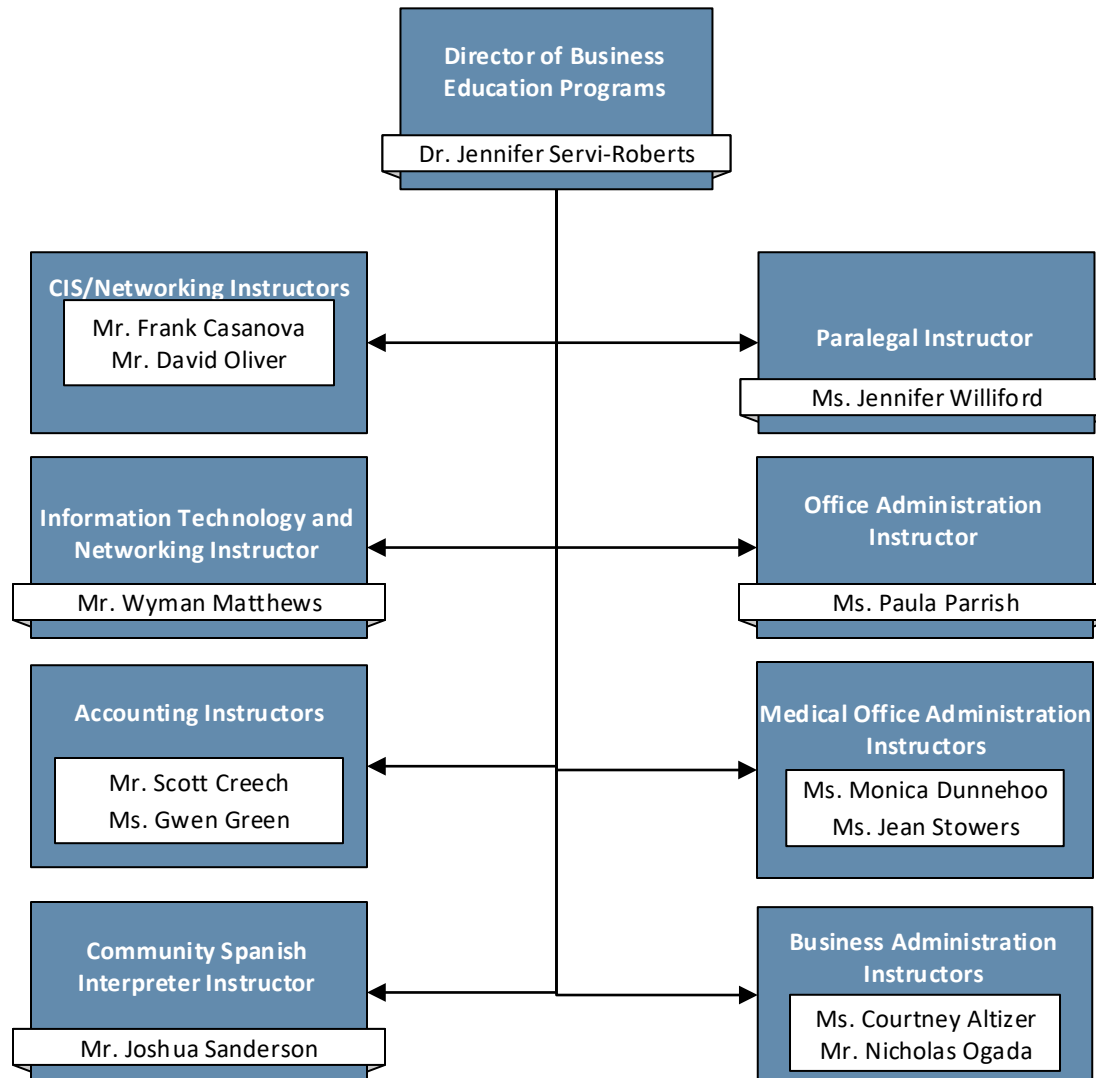
## Business and Advanced Technologies





# Organizational Structure

## Business and Education Programs





# Organizational Structure

## Public Services

