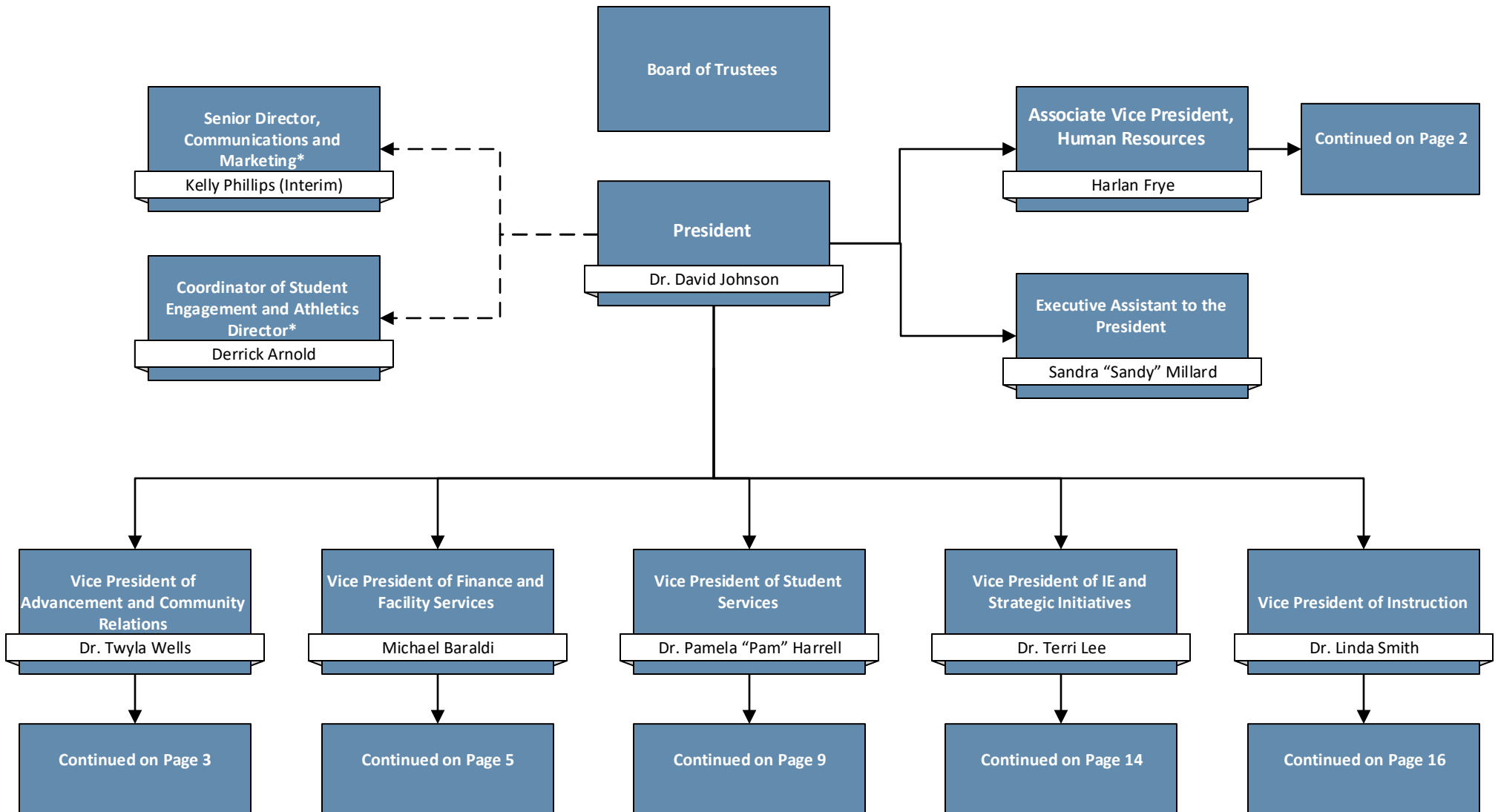




# Organizational Structure

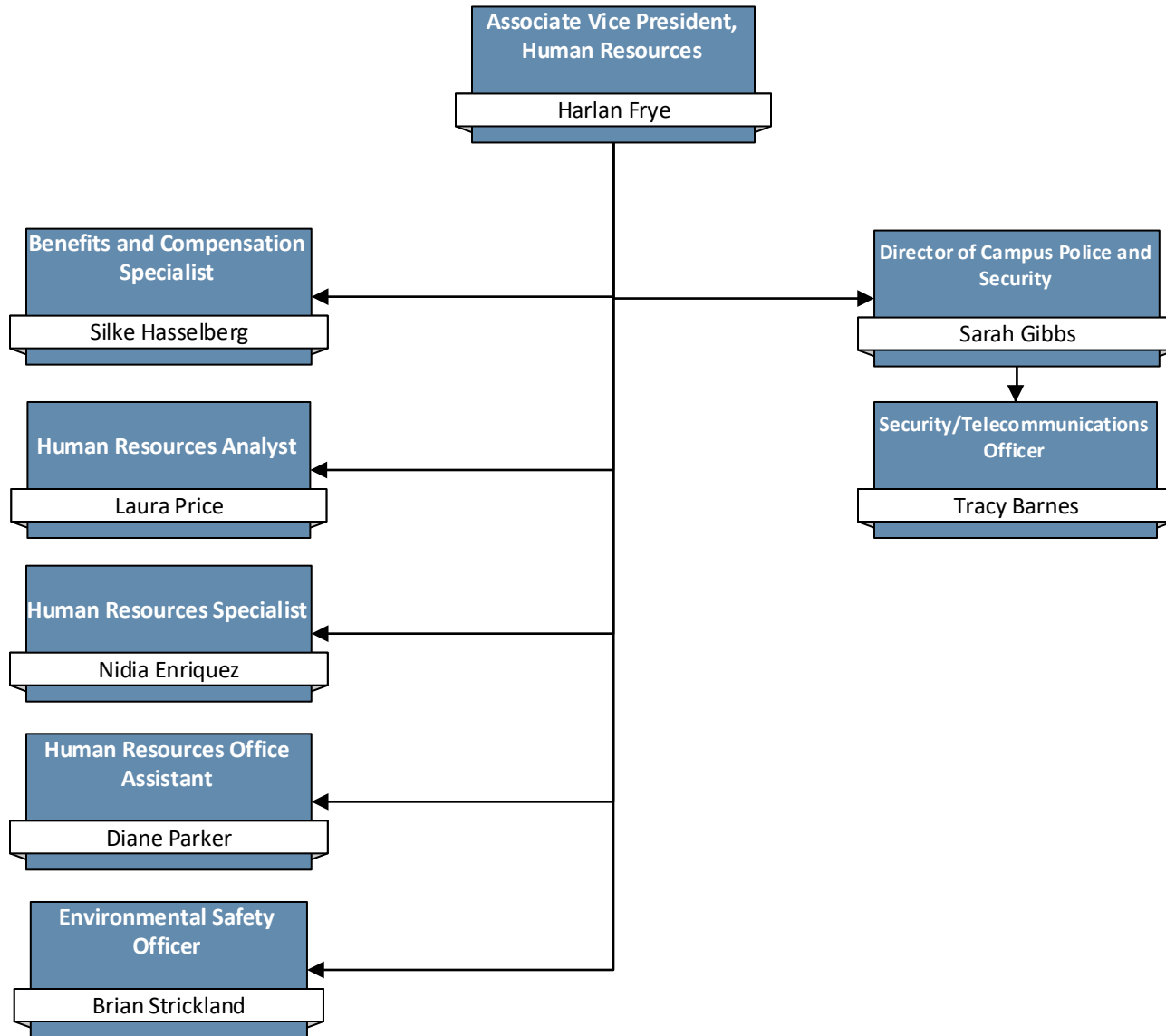
## President's Office and Vice Presidents





# Organizational Structure

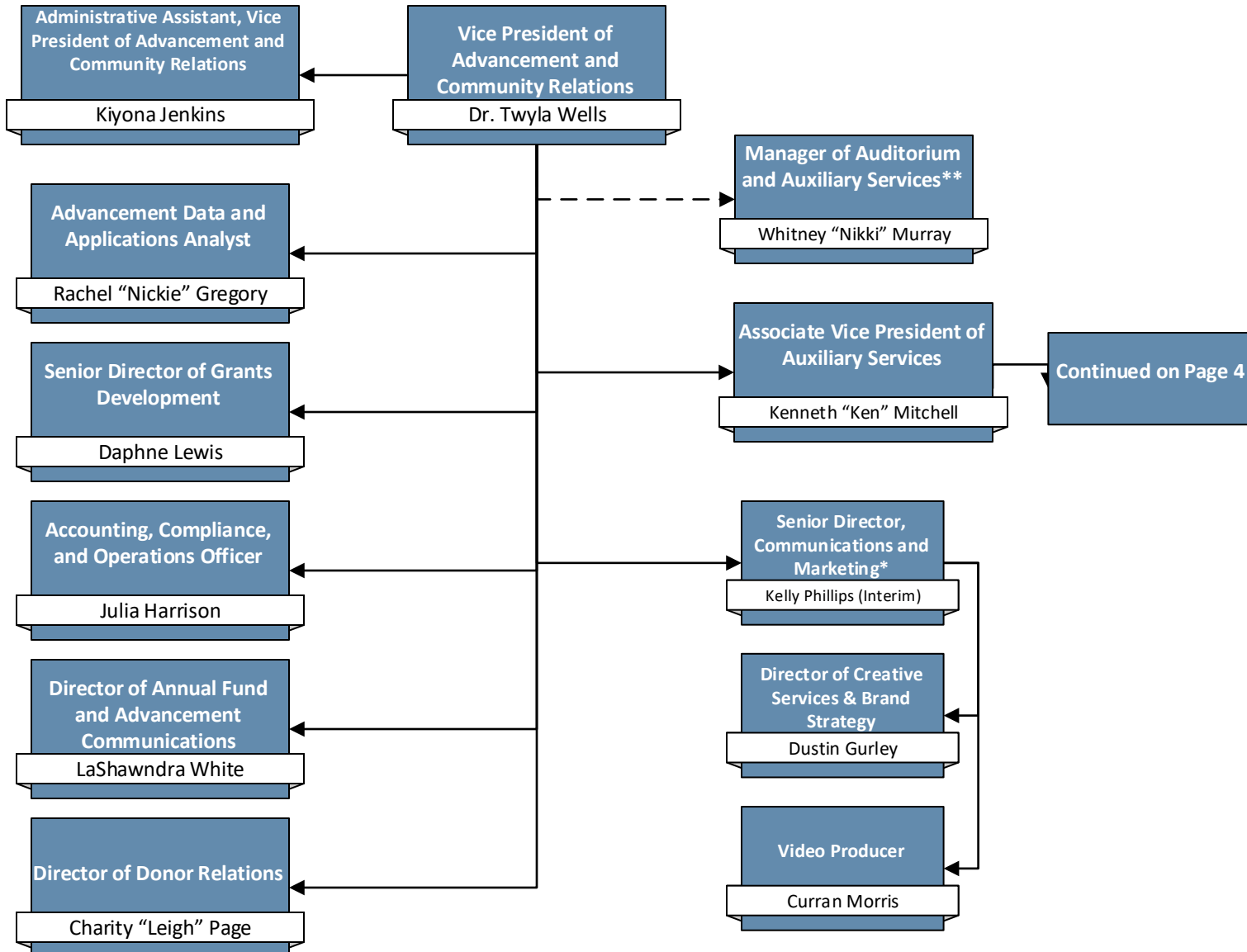
## Human Resources, Safety and Campus Security





# Organizational Structure

## Advancement and Community Relations



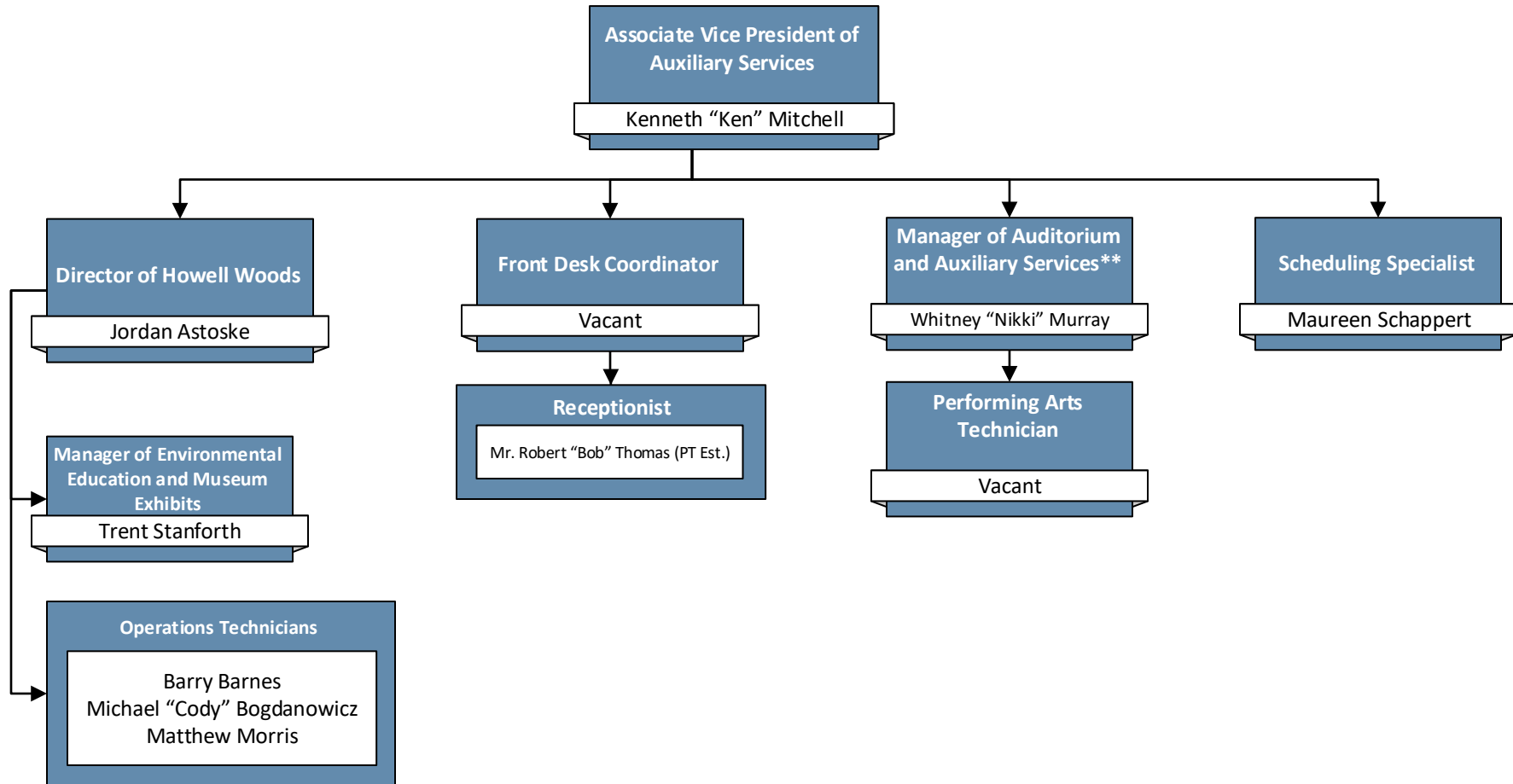
\*While this position reports directly to the vice president of advancement and community relations, it also maintains a direct advisory relationship with the president.

\*\*While this position reports directly to the associate vice president of auxiliary services, it also maintains a direct advisory relationship with the vice president of advancement and community relations



# Organizational Structure

## Auxiliary Services

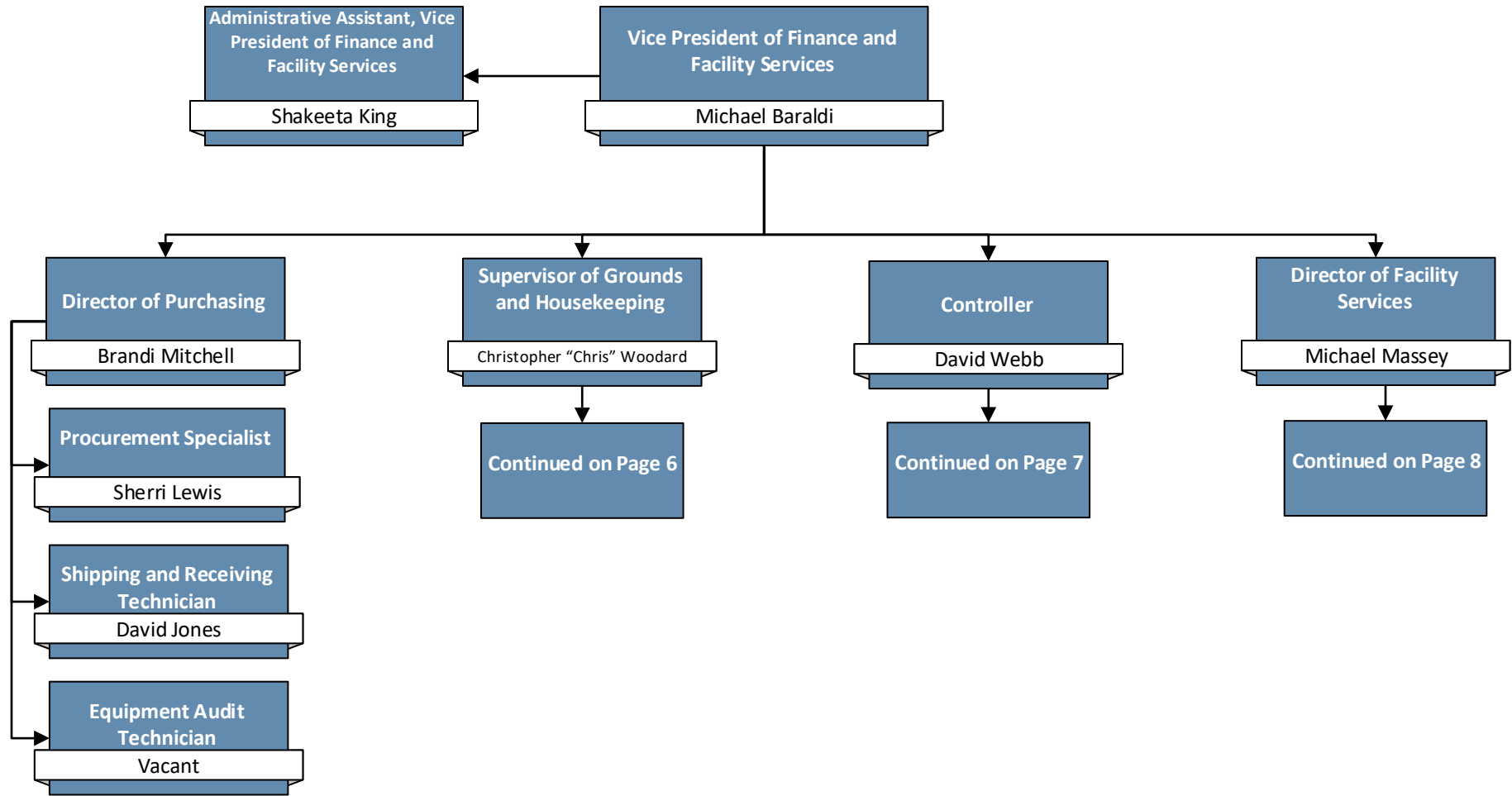


\*\*While this position reports directly to the associate vice president of auxiliary services, it also maintains a direct advisory relationship with the vice president of advancement and community relations



# Organizational Structure

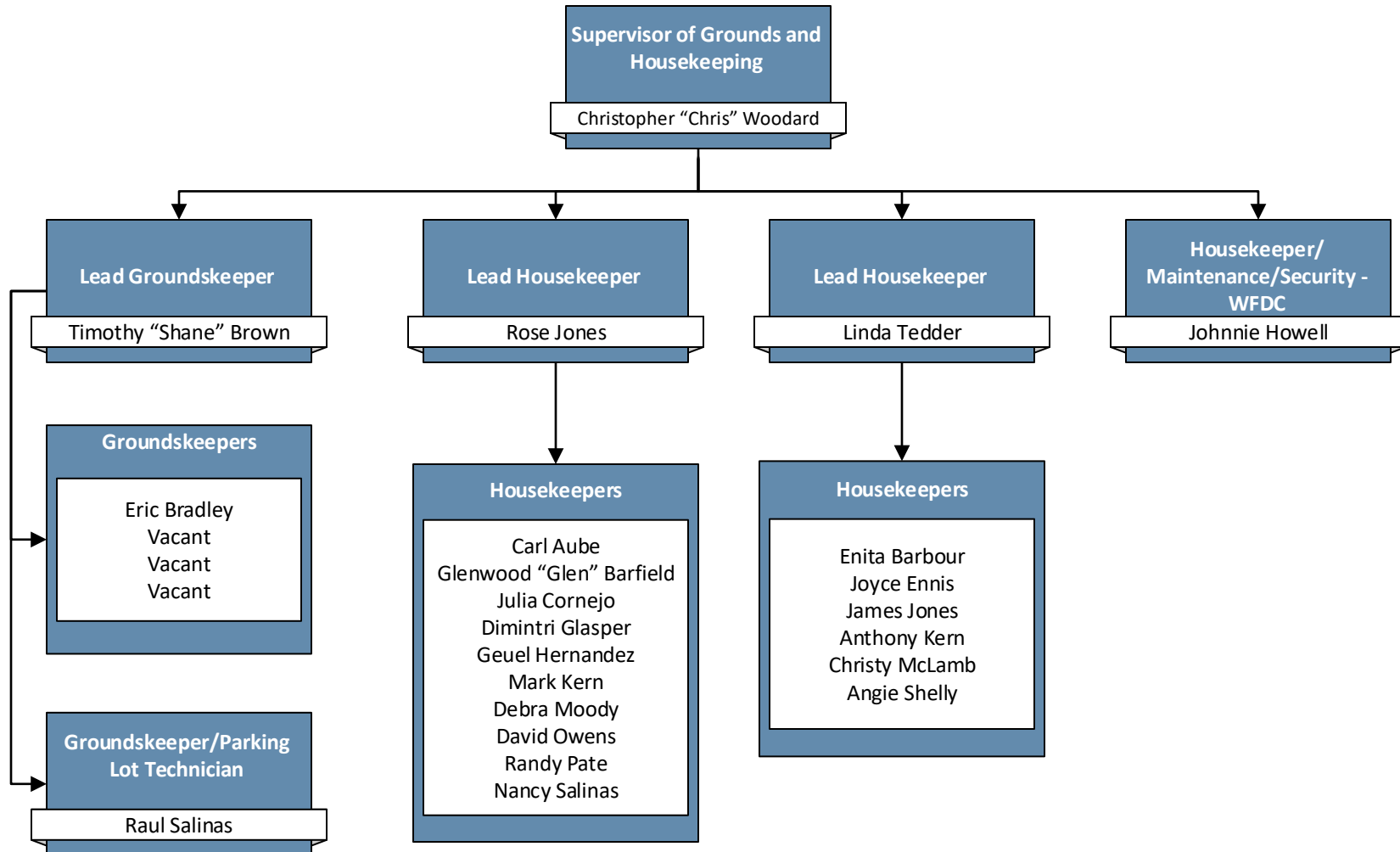
## Finance and Facility Services





# Organizational Structure

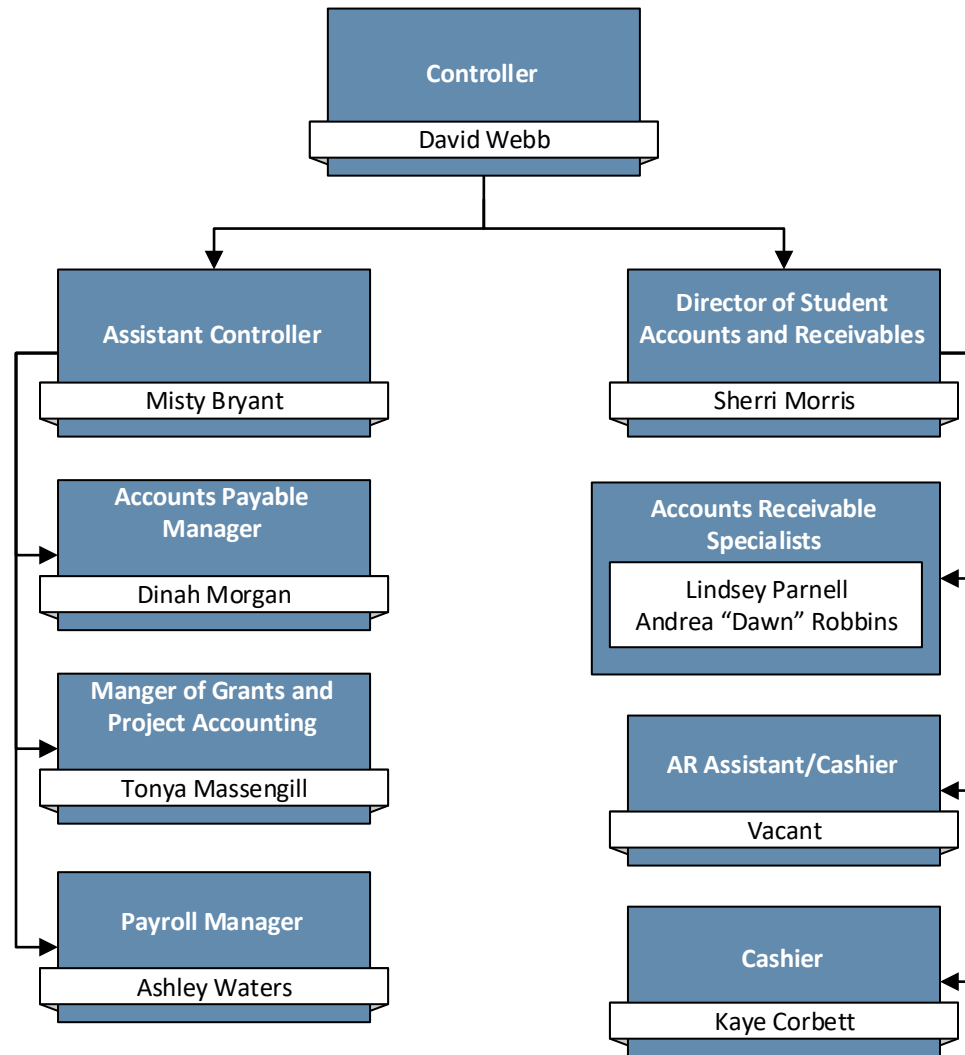
## Grounds and Housekeeping





# Organizational Structure

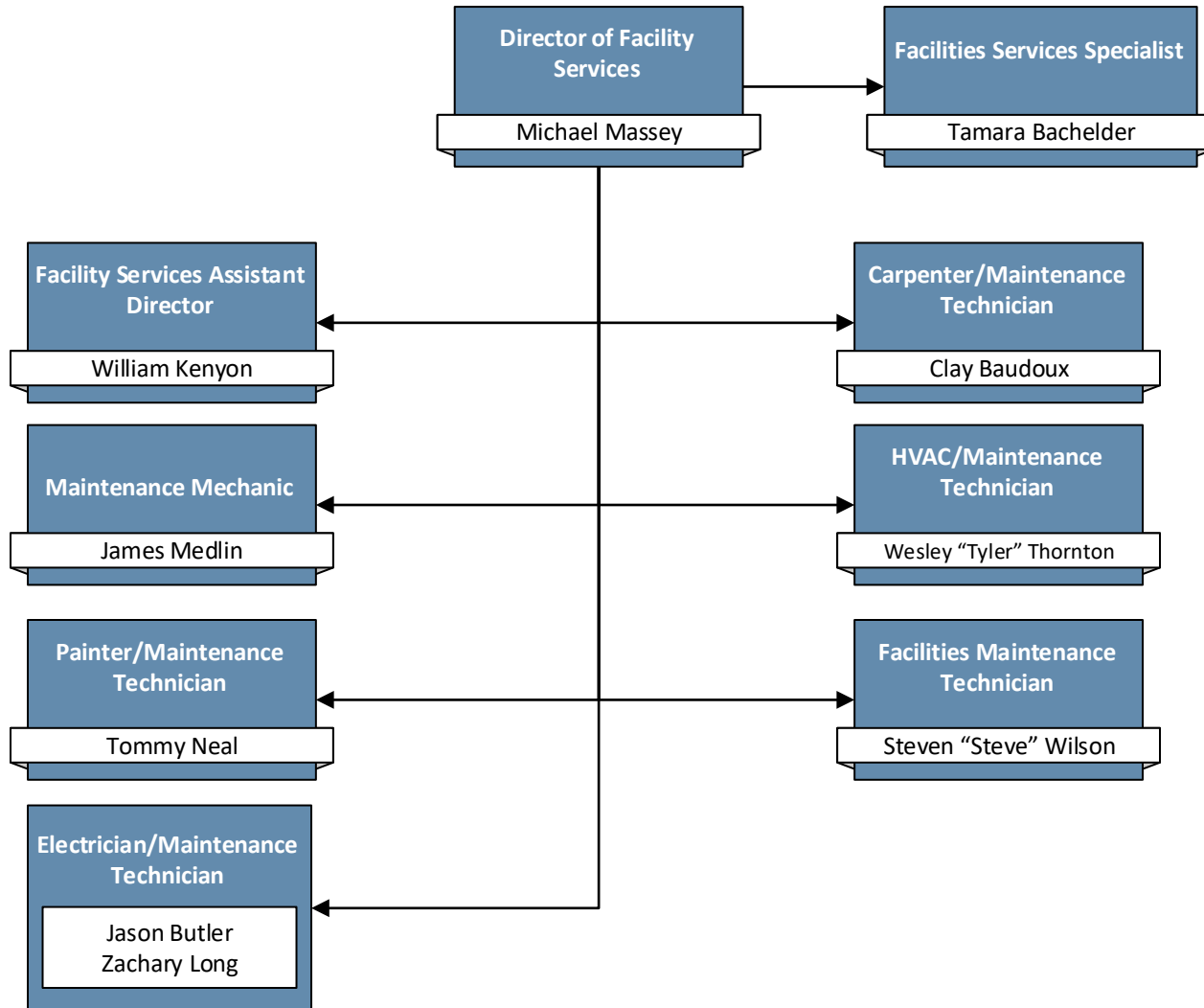
## Controller





# Organizational Structure

## Facility Services

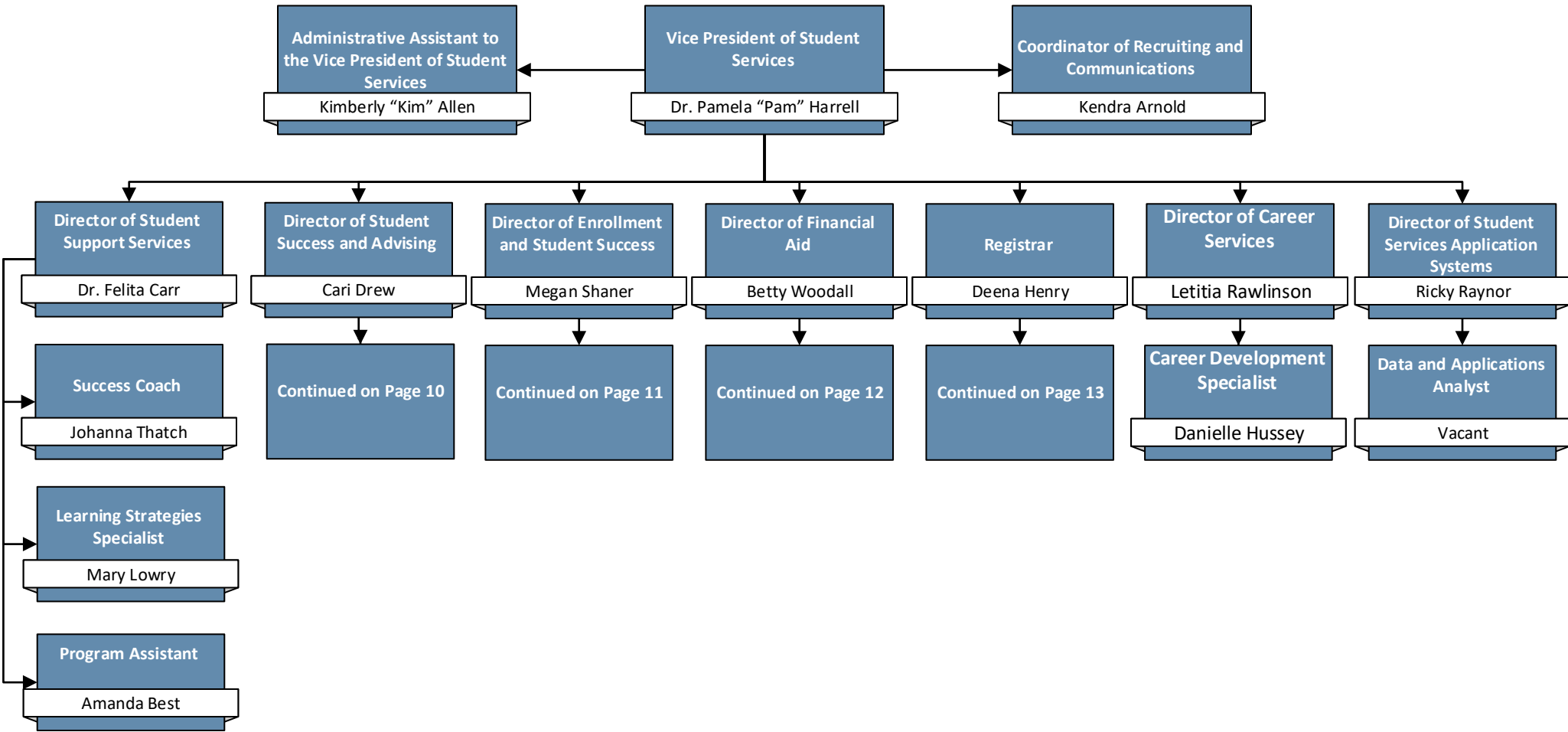






# Organizational Structure

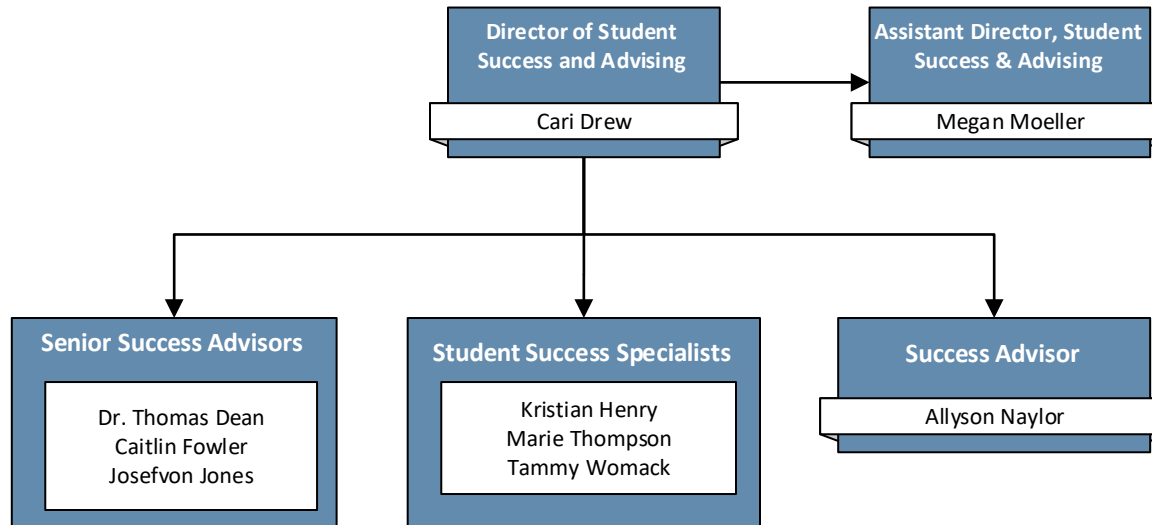
## Student Services





# Organizational Structure

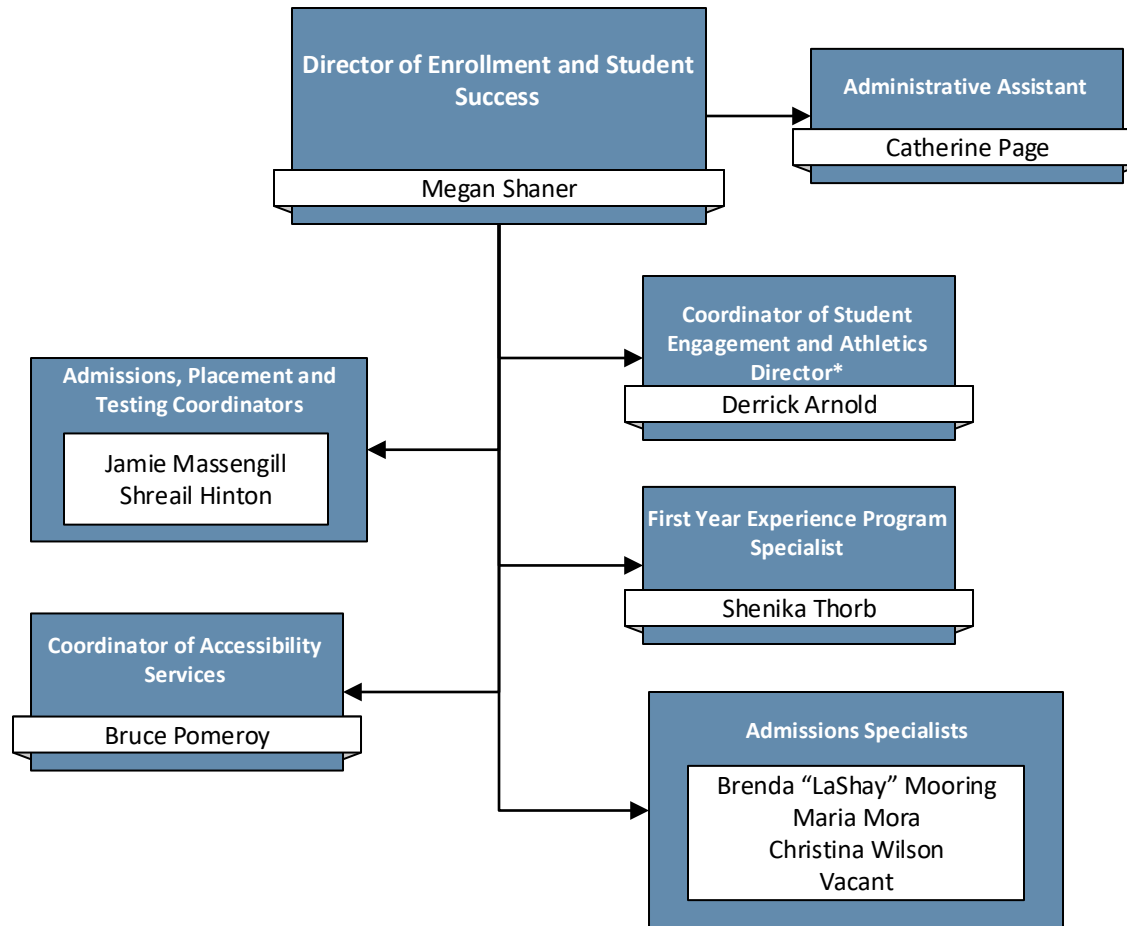
## Student Success & Advising





# Organizational Structure

## Admissions and Student Engagement

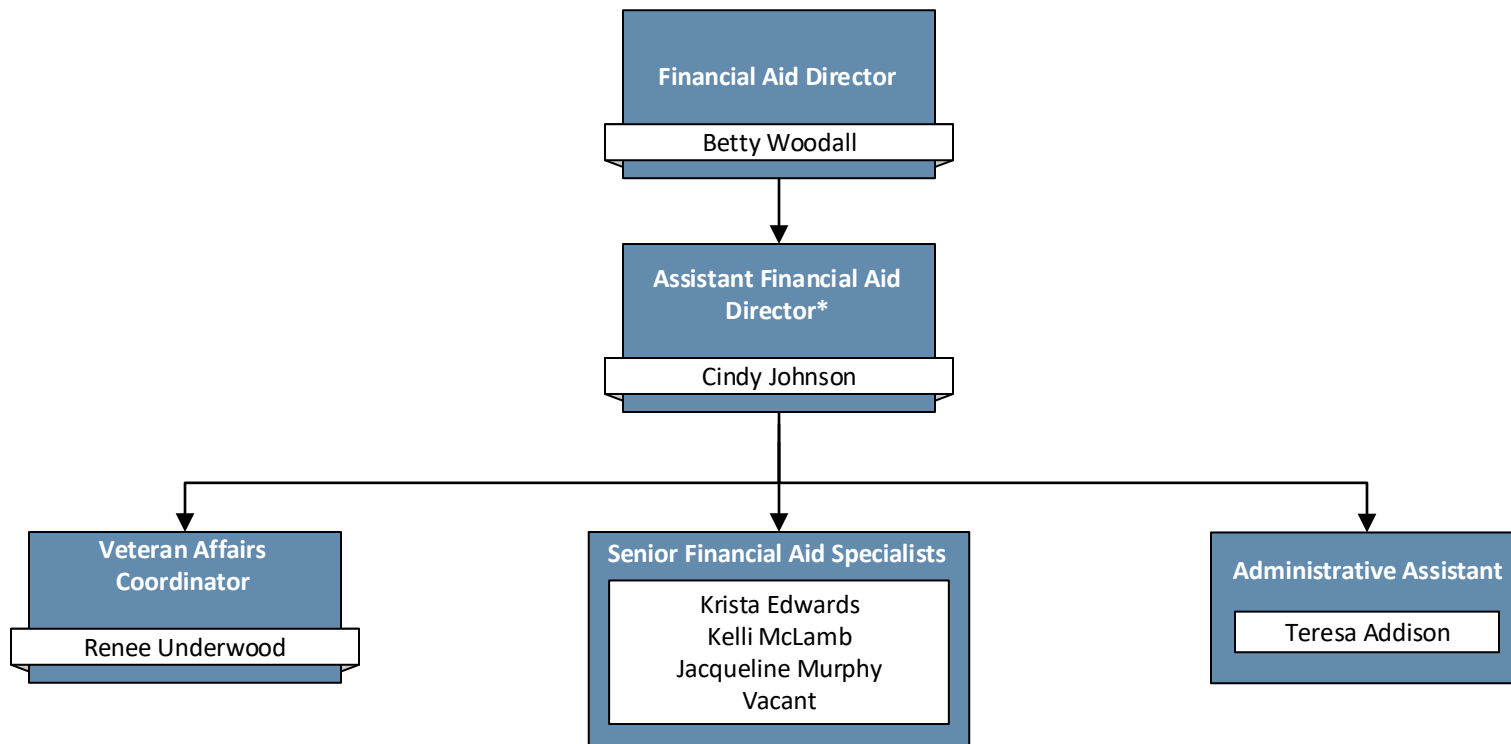


\*While this position reports directly to the director of enrollment and student success, it also maintains a direct advisory relationship with the president.



# Organizational Structure

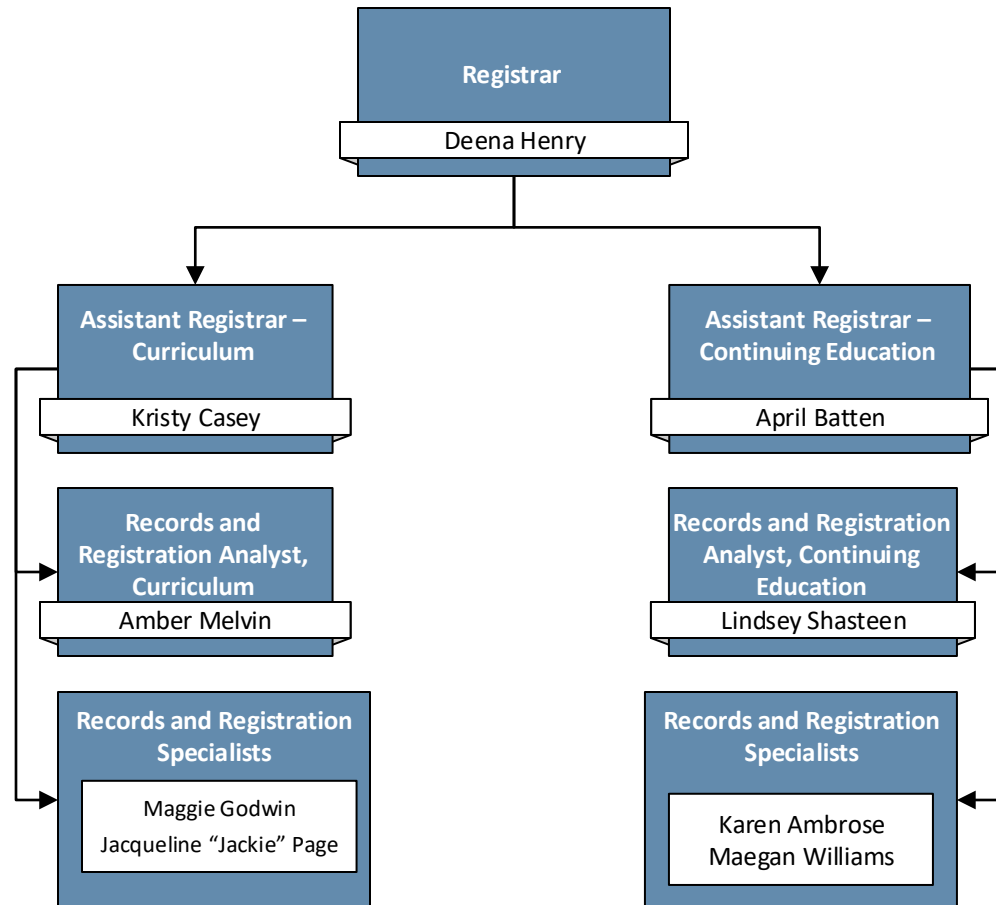
## Financial Aid





# Organizational Structure

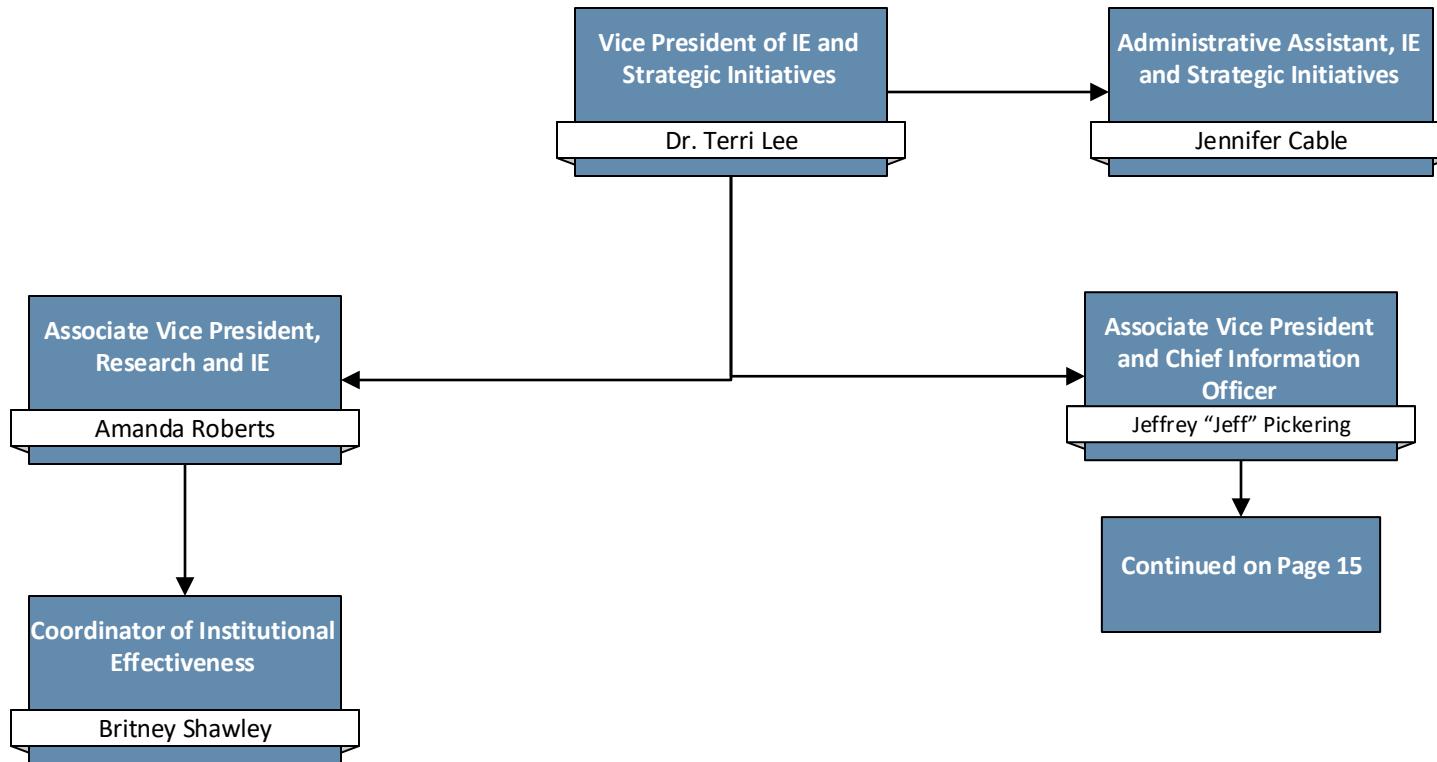
## Registrar





# Organizational Structure

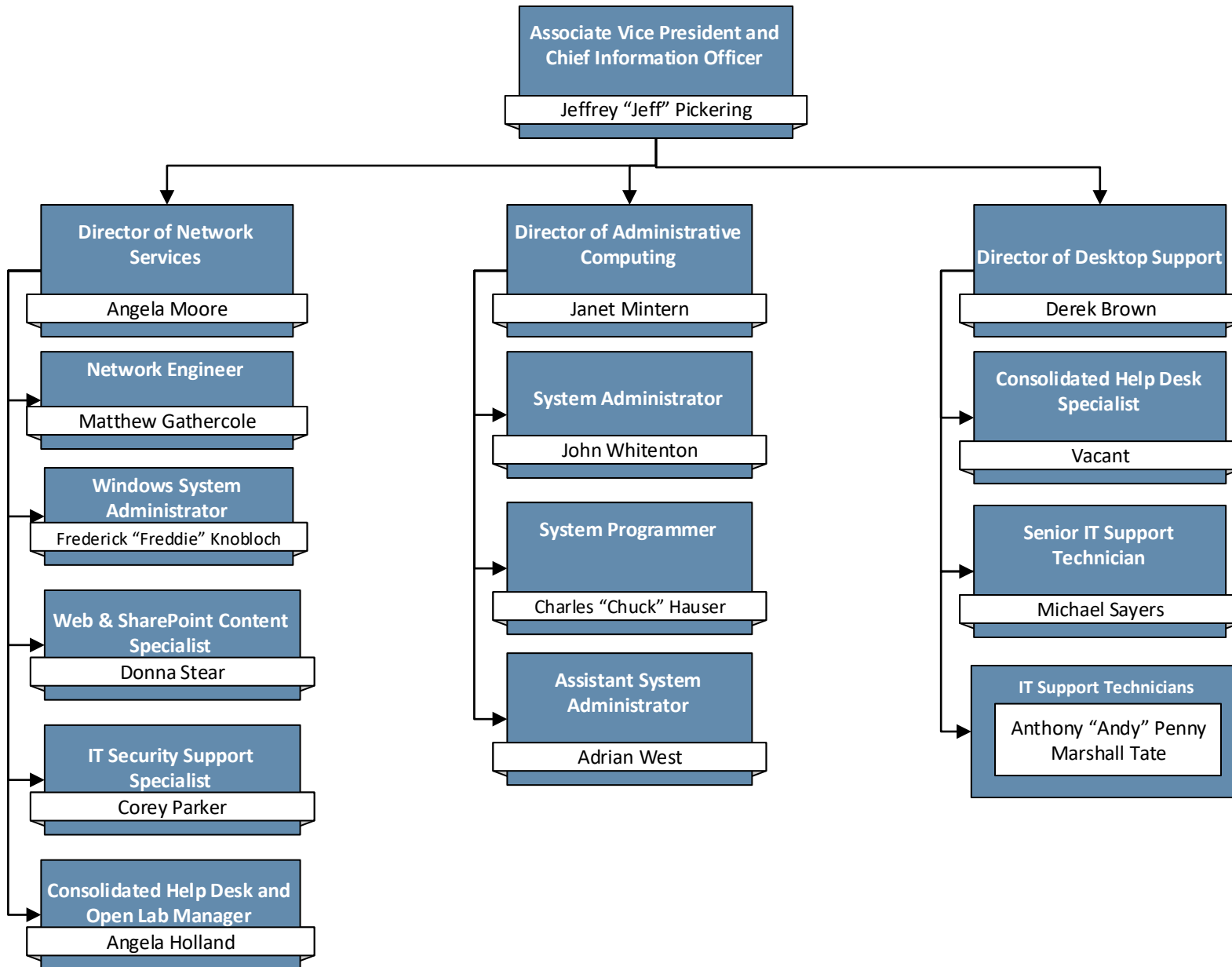
## Institutional Effectiveness and Strategic Initiatives





# Organizational Structure

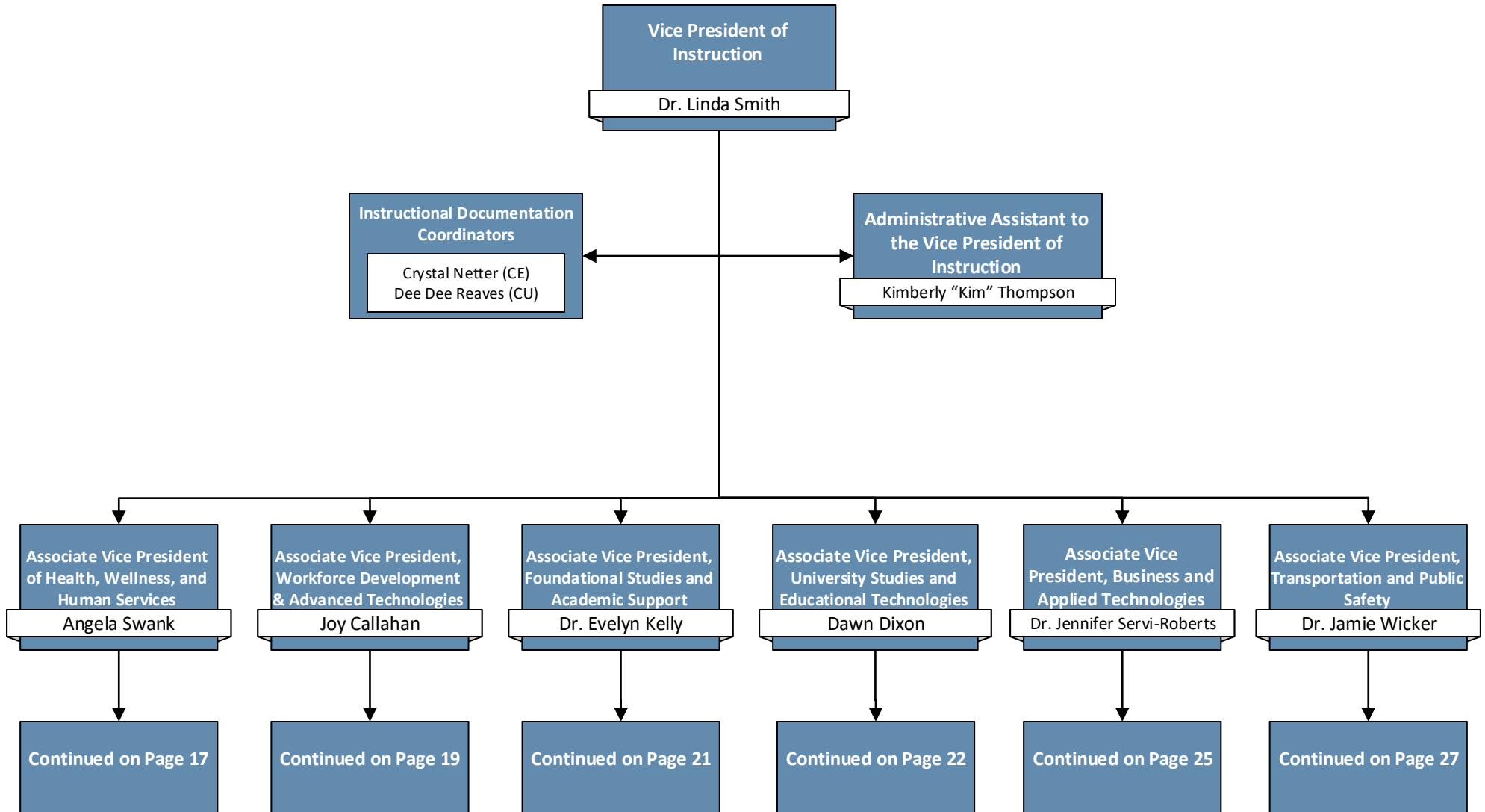
## Information Technology





# Organizational Structure

## Instruction

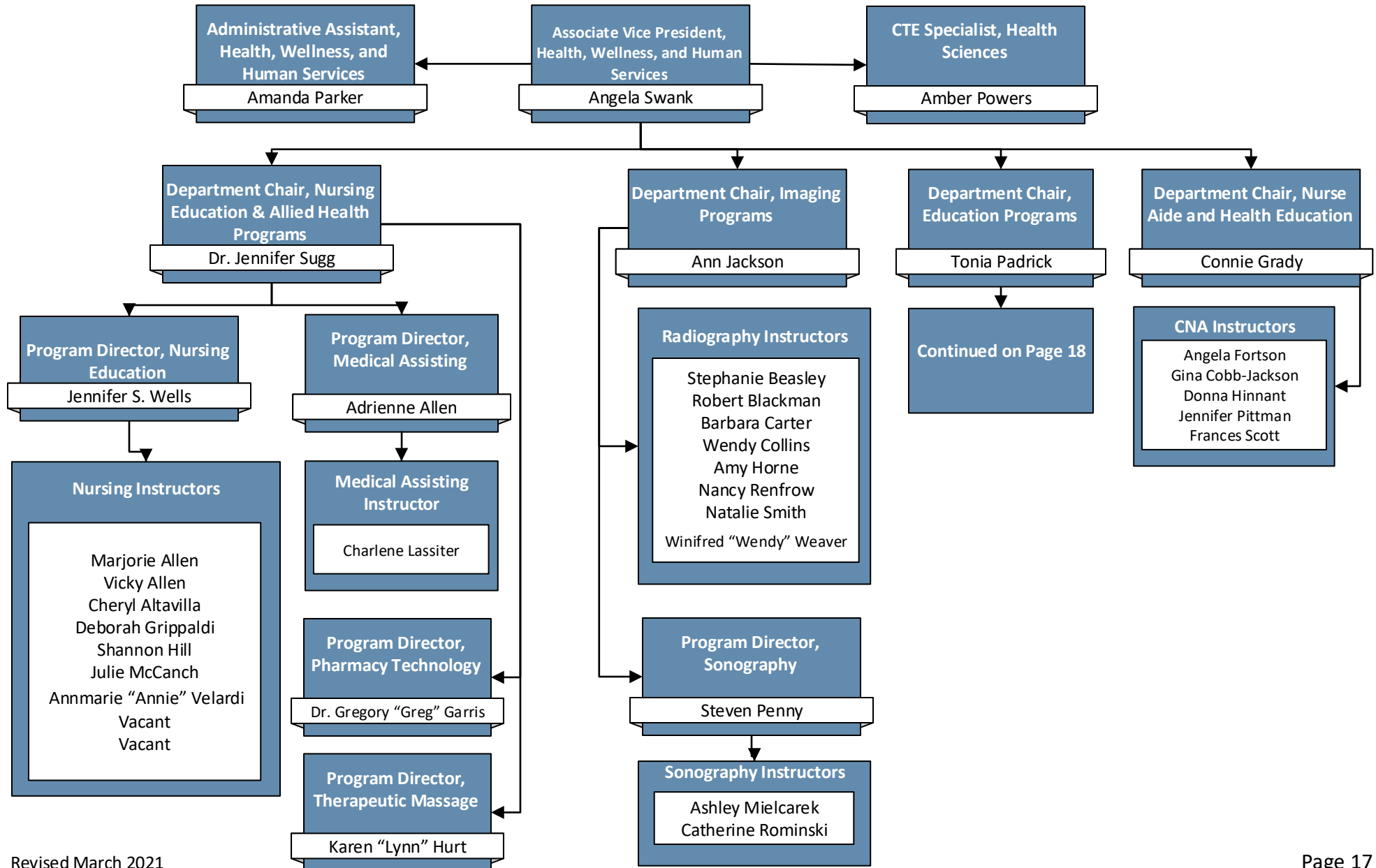






# Organizational Structure

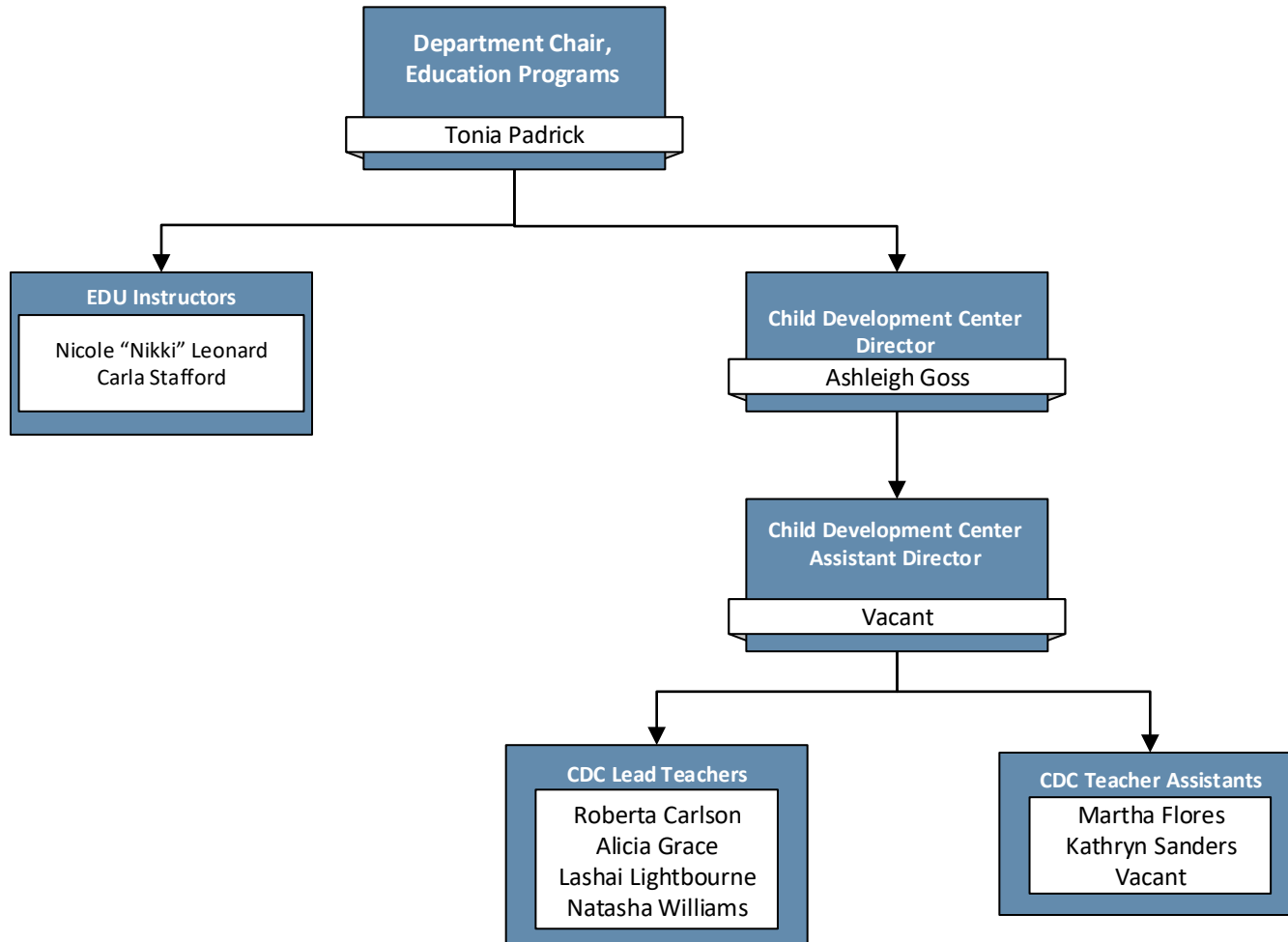
## Health, Wellness, and Human Services





# Organizational Structure

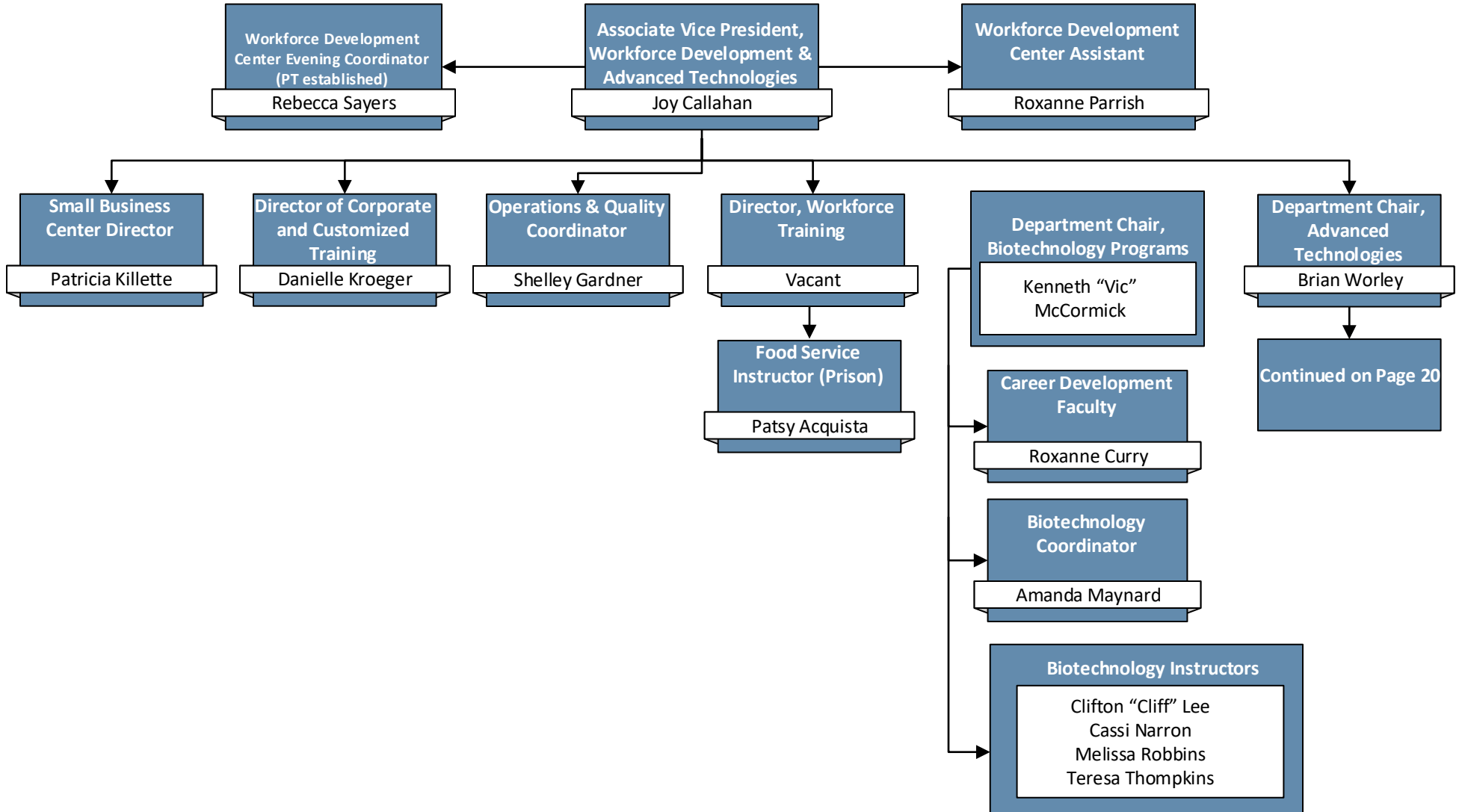
## Education Programs





# Organizational Structure

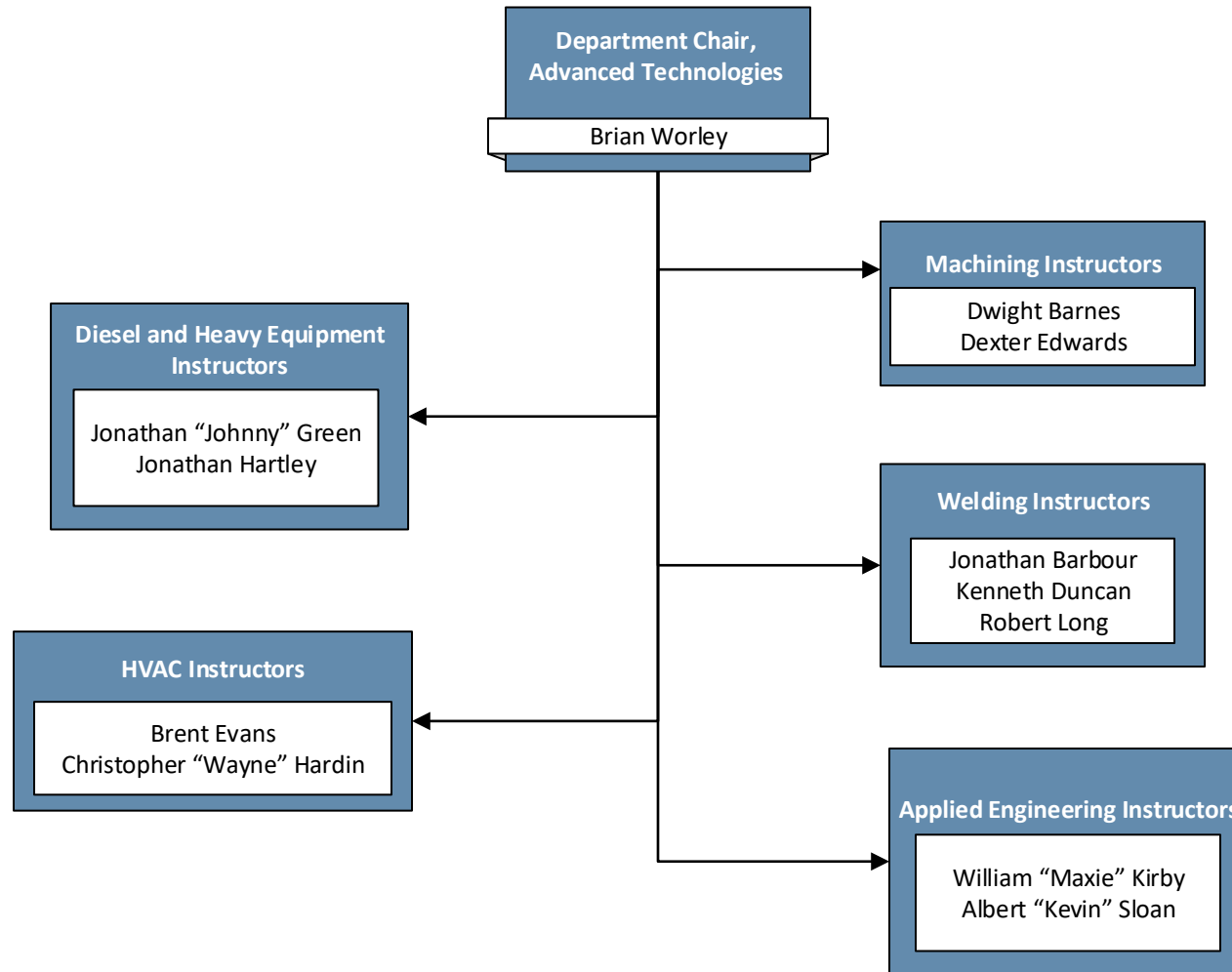
## Workforce Development and Advanced Technologies





# Organizational Structure

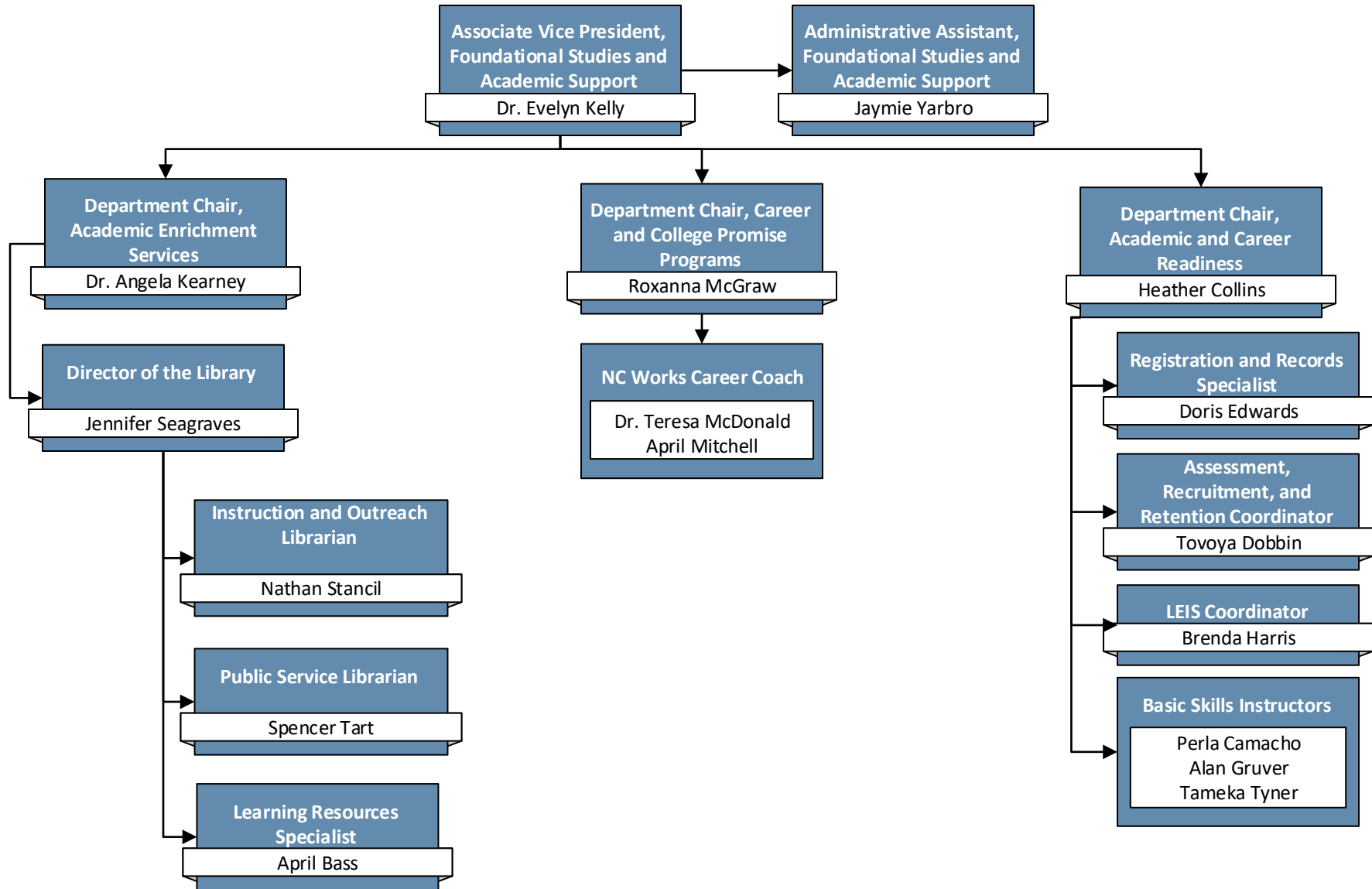
## Advanced Technologies





# Organizational Structure

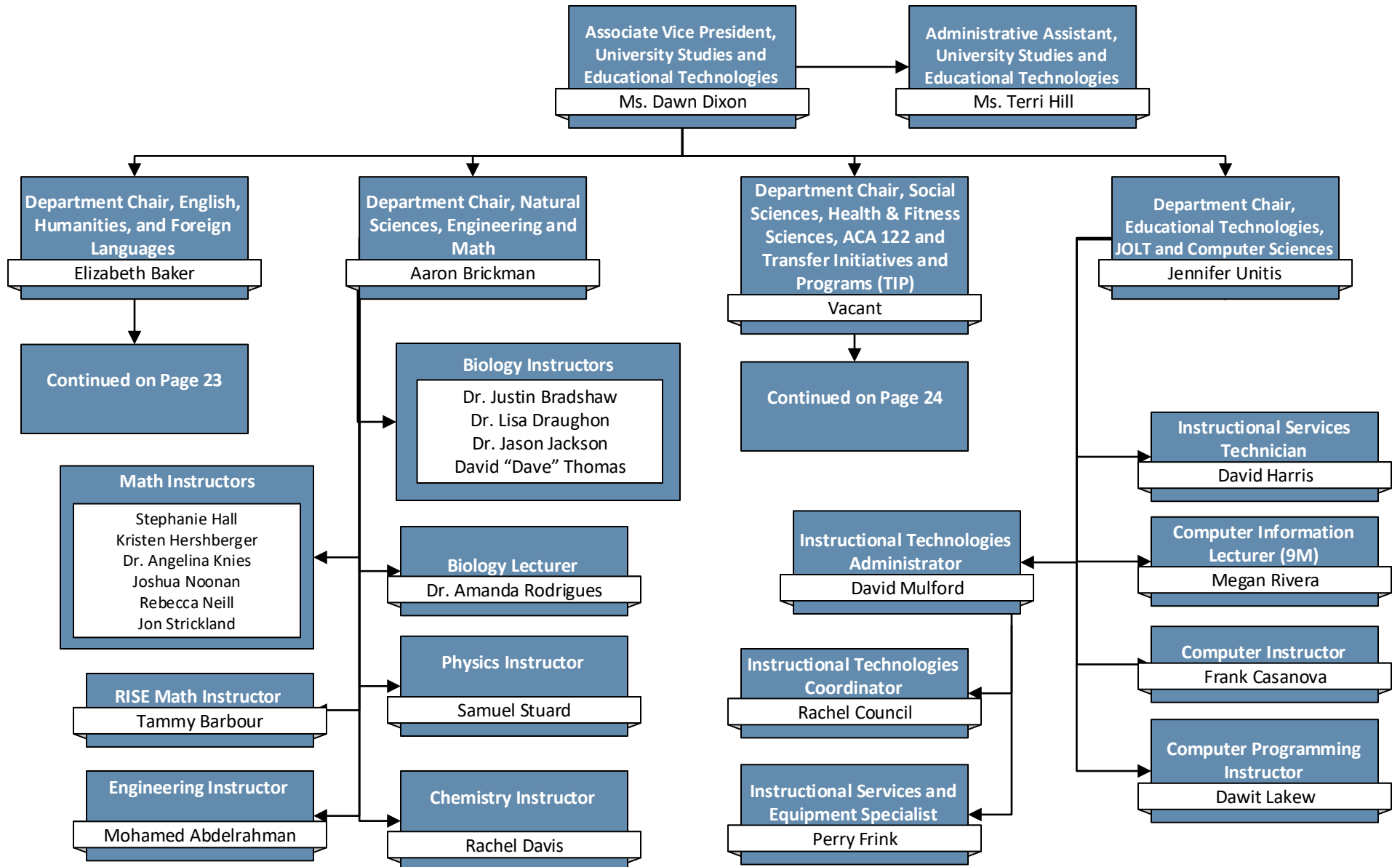
## Foundational Studies and Academic Support





# Organizational Structure

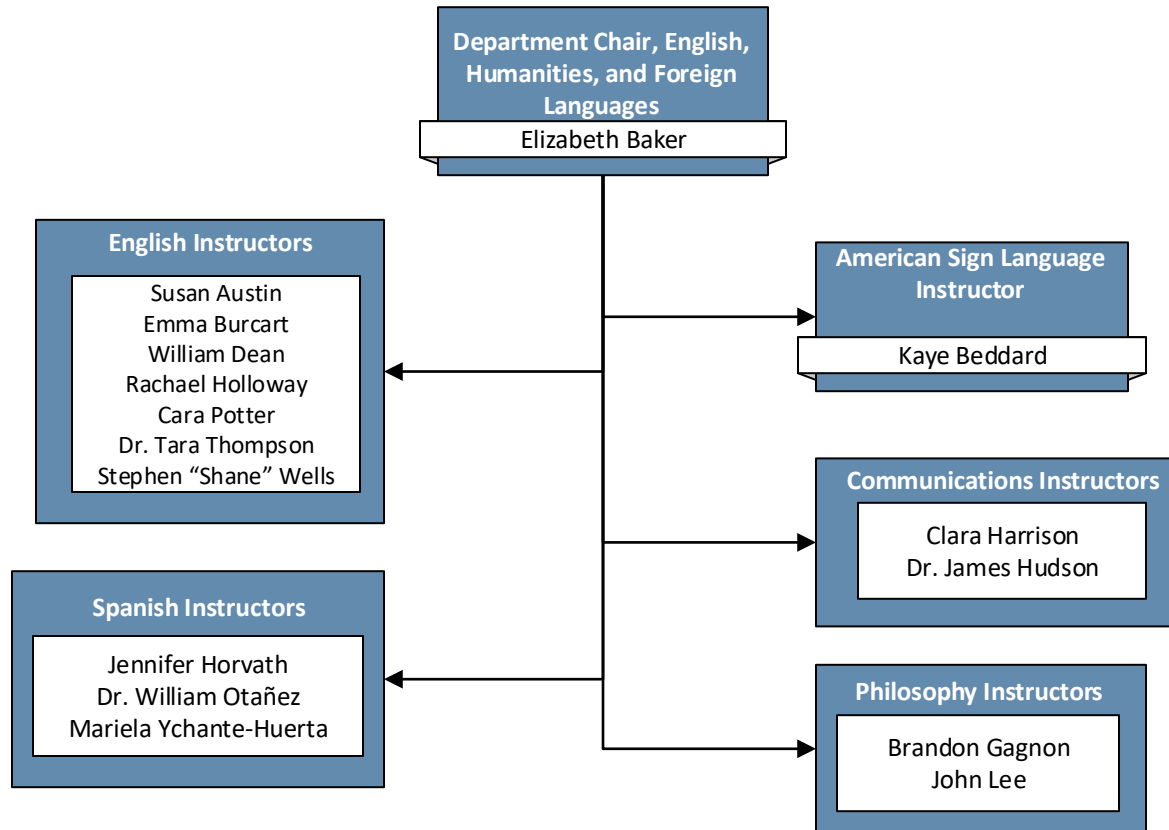
## University Studies and Educational Technologies





# Organizational Structure

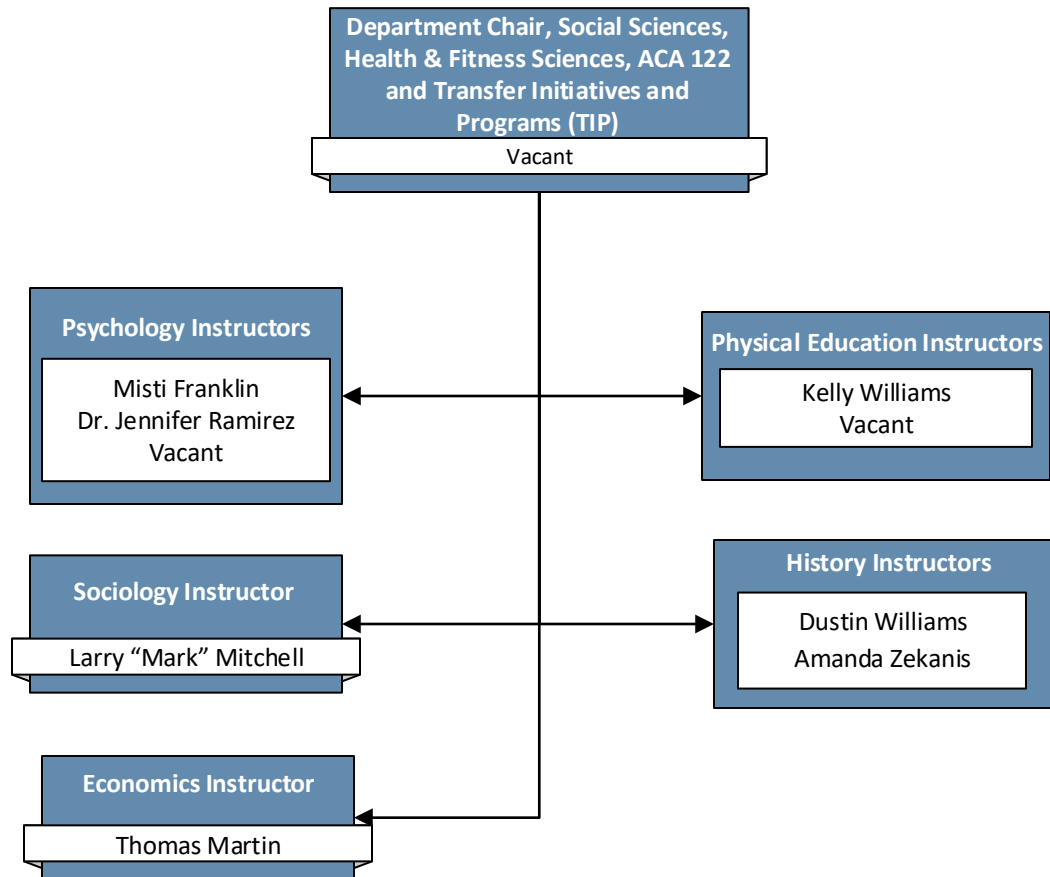
## English, Humanities, and Foreign Languages





# Organizational Structure

Social Science, Health & Fitness, ACA 122 & TIP

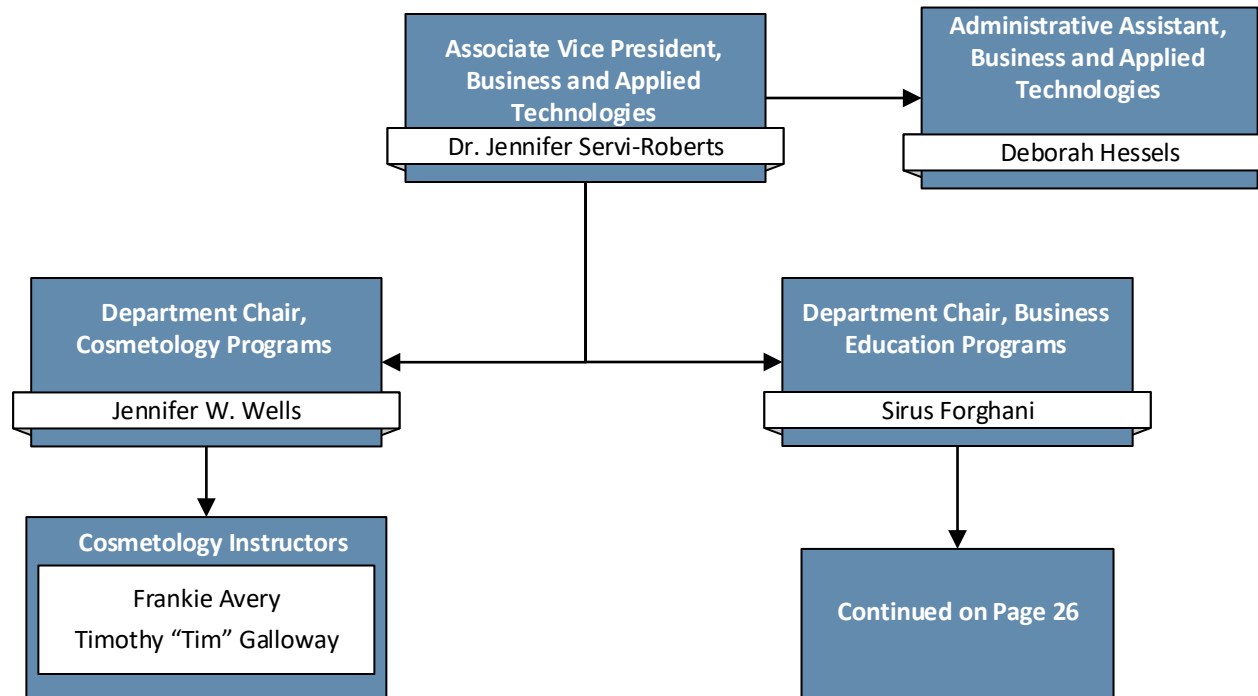






# Organizational Structure

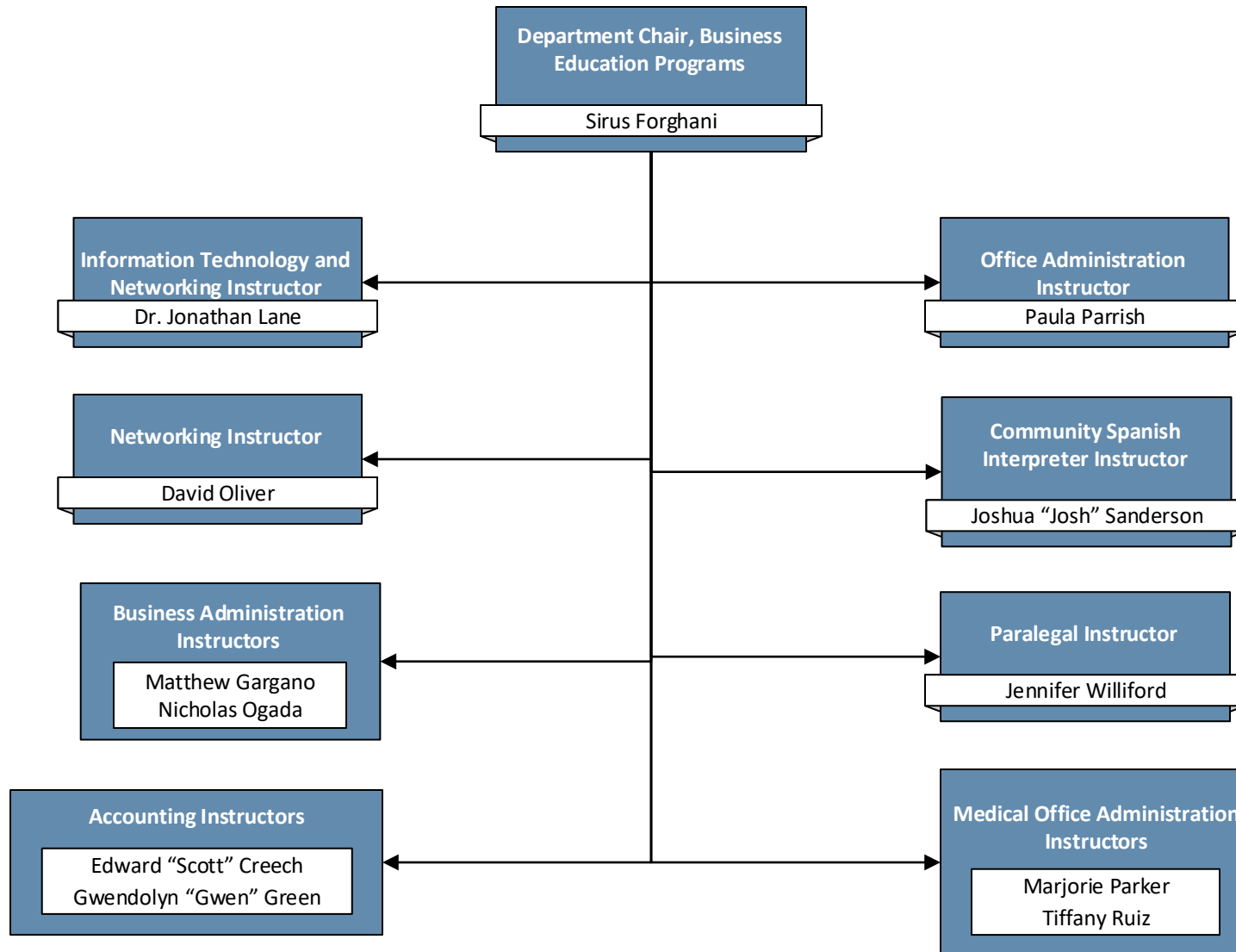
## Business and Applied Technologies





# Organizational Structure

## Business Education Programs





# Organizational Structure

## Transportation and Public Safety

