

Career & College Promise (CCP)

Parent/Student Information Session
January 27 and February 11, 2020
Sum/Fall 2020



Disclosure Statement

Please note this presentation reflects the best interpretation of the recently revised legislation.

Recent legislation allowing qualified Freshman and Sophomores to enroll in college transfer pathways has not been approved at the community college level at this time.

Johnston Community College CCP Faculty/Staff

- Dr. Evelyn Kelly - Associate Vice President of Foundational Studies and Academic Support
- Roxanna McGraw - Department Chair of Career and College Promise Programs
- April Mitchell - Career Coach, Faculty Advisor
- Dr. Teresa McDonald - Career Coach, Faculty Advisor
- Jaymie Yarbrow - Administrative Assistant to the AVP of FS & AS

JCC CCP Faculty and Staff Assignments

JCC-CCP Team Evelyn Kelly Roxanna McGraw April Mitchell Teresa McDonald		
In Johnston County	Private, Charter, Homeschool	Public Schools
Outside of Johnston County	Private, Charter, Homeschool	Public Schools (in surrounding counties)

Johnston County Public School CCP Staff

- Suzanne Lujan – **Executive Director of Career & College Readiness**
- Barretta Haynes – **Director of Career & College Promise**
- Becky Russell – **CCP Specialist**

JCPS CCP Staff School Assignments

Barretta Haynes CCP Director	Becky Russell CCP Specialist
Clayton, Cleveland, Smithfield-Selma high schools. Other CCP Director Duties	Corinth Holders, North Johnston, Princeton, South Johnston and West Johnston.

Career and College Promise (CCP) “Dually Enrolled Program”

College Transfer Pathway (CTP)

Career and Technical Education
Pathway (CTE) and Workforce
Continuing Education Pathway (WCEP)

For all eligible NC High School Students

Cooperative Innovative
High Schools (CIHS)

Designated High Schools

CCP in Johnston County

- JCPS Partnership with Johnston Community College
- College Transfer (CT) and Career & Technical Education (CTE)
- 26 Pathways (3 CT/ 23 CTE)
- Courses offered on JCC Campus, online, LiveTV, and select high school campuses
- 980 high school students went through the CCP process in the fall
- Over 850 students attend JCPS

CCP Homework...

Select a **Pathway** based upon your future career and/or college goals - CCP is focused on **“Pathway”** selection NOT **“Course”** Selection

CCP is “Interdependent” Process

Students will need to carefully “research” the various pathways and know your current status (eligibility) prior to meeting with a CCP School Representative.

<https://www.johnstoncc.edu/programs/career-and-college-promise/>

College Transfer Pathways

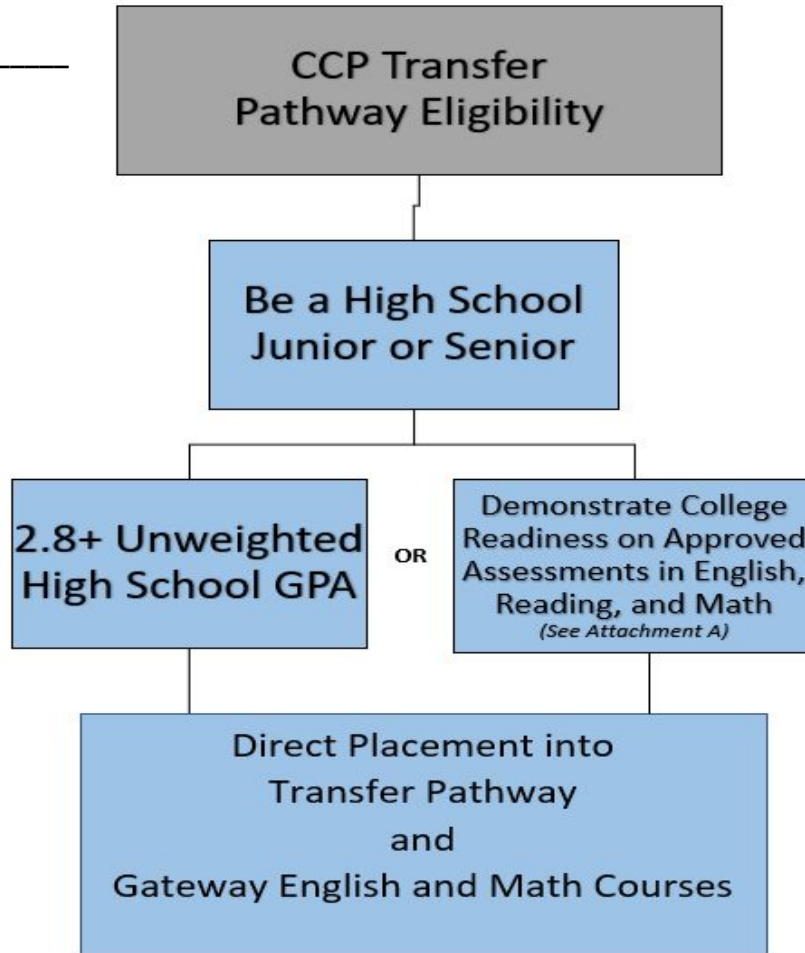
- Associate in Science (AS)
- Associate in Arts (AA)
- Associate in Engineering (AE)

(AE students must be calculus ready: Transcript must reflect that the student earned an A in high school PreCalculus or successfully complete college MAT 171 and MAT 172 with a C or better)

**ALL COURSES TRANSFER TO UNC SYSTEM
SCHOOLS & MOST PRIVATE SCHOOLS**

Name: _____
Unweighted GPA: _____

<https://www.johnstoncc.edu/programs/career-and-college-promise/>



Current Sophomores can be “Pre Enrolled” in the program. At the end of the semester we will print another copy of the student’s transcript to verify eligibility. Students are not eligible to take summer classes.

*Current College Transfer Student Requirements

- Be a High School Junior or Senior
- 2.8 + Unweighted High School GPA OR Demonstrate College Readiness on Approved Assessments in English, Reading, and Math

*Direct Placement into Transfer Pathway
and
Gateway English and Math Courses*

**Current eligible Sophomores can be “Pre Enrolled” in the program. At the end of the semester we will print another copy of the student’s transcript to verify eligibility. Students are not eligible to take summer classes.*

College Transfer and CTE Approved Diagnostic Assessment Tests

Assessment	PSAT 10 and PSAT/NMSQT (2015 and Future)	PreACT/ACT	SAT (March 2016 and Future)	*RISE Placement Test	AP	*NCDAP	Check CCP website for International Baccalaureate and Cambridge Information
English	26 or 460 for EBR and Writing	18	EBR and Writing 480	75 or higher on Tier 1 and Tier 2 Sent Skills	English, Language and Composition - 3 or higher <hr/> English, Literature, and Composition - 3 or higher	Composite of 151 or higher	
Reading		22		80 Reading			
Mathematics	24.5 or 510	22	530	55 Arithmetic 75 Elem Alg	Calculus AB - 3 or higher <hr/> Calculus BC - 3 or higher	7 on each DMA 010-060	

**Assessment not available at this time.
Accuplacer is not on the approved list of Diagnostic Assessment Tests.*

CCP College Transfer Pathway

[CCP College Transfer/CTE Pathways](#)

Note: College Transfer - Students may take two Foreign Language courses in place of two courses in their pathway (SPA or ASL).

[DPI Resources \(dual credit info\)](#)

~Students are strongly encouraged to take high school biology or high school chemistry before taking college biology or chemistry

High School students in the CCP College Transfer Pathways must complete the entire pathway before taking additional courses in the Associate degree with the exception of mathematics courses.

ACA 122 is required at most colleges and universities.

CTE Pathways

***Courses in the pathway marked with an asterisk are subject to change**

- Accounting Diploma Certificate
- *Air Conditioning, Heating, and Refrigeration Technology
- *Applied Engineering
- *Bioprocess Technology Diploma
- Business Administration Certificate
- *Community Spanish Interpreter Diploma
- *Computer-Integrated Machining Technology
- Cosmetology
- Criminal Justice Technology
- Criminal Justice Technology - Forensic Science
- *Diesel and Heavy Equipment Technology

CTE Pathways...Continued

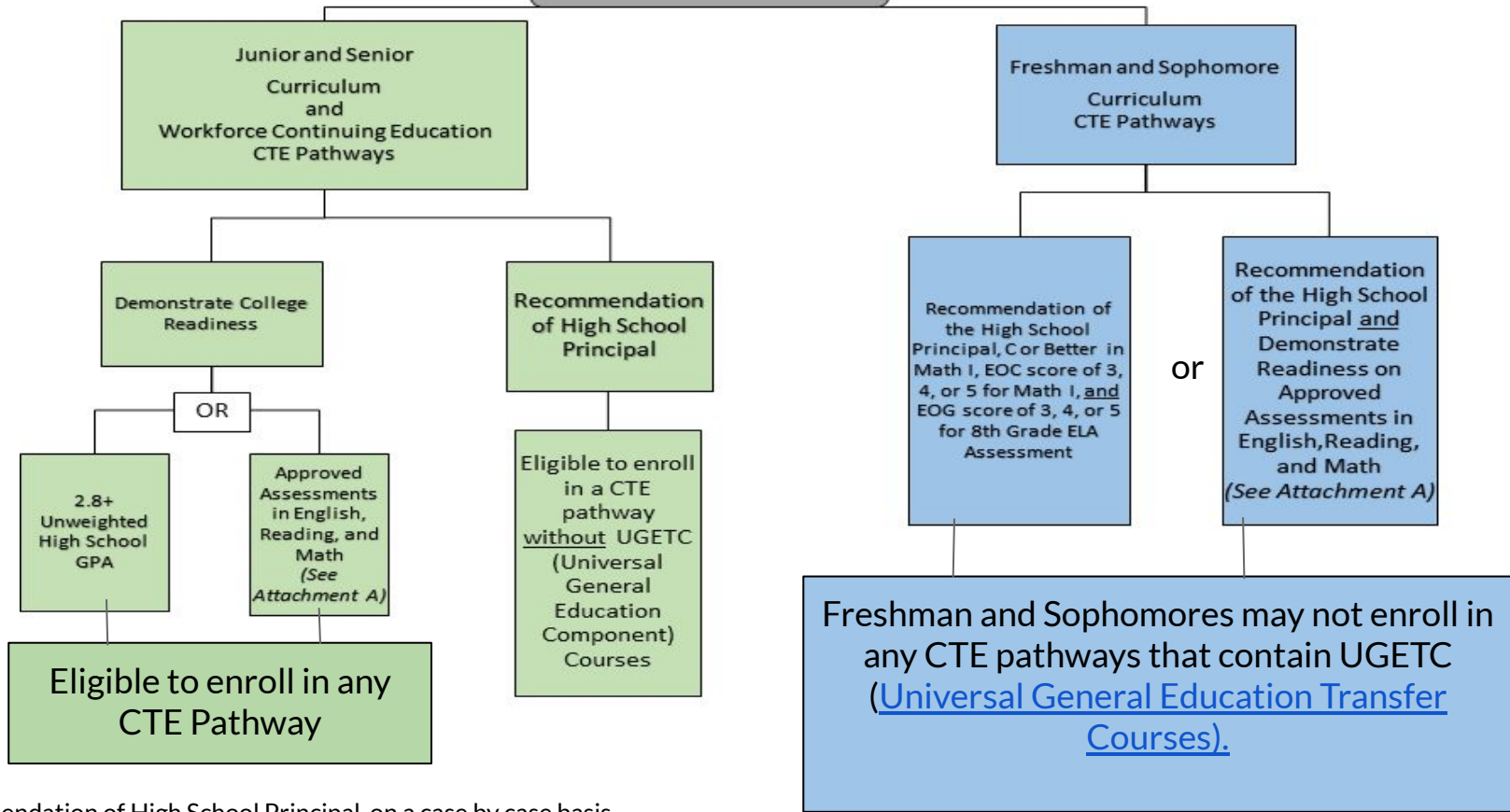
- Early Childhood Education: Preschool Certificate
- Early Childhood Education: Infant/Toddler Care Certificate
- Emergency Medical Science (Age Requirement)
- Fire Protection Technology
- *Information Technology
- Medical Assisting Certificate
- *Medical Office Administration Diploma
- Nurse Aide (Age Requirement -must be 16 1/2 on the first day of class)
- *Paralegal Diploma
- Pharmacy Technology (Seniors Only)
- *Welding Technology

****Students requiring a Principal Recommendation are not eligible to select a CTE pathway with UGETC (Universal General Education Transfer Component) Courses***

Name: _____
Unweighted GPA: _____

CCP CTE Pathway Eligibility

<https://www.johnstoncc.edu/programs/career-and-college-promise/>



Current CTE Student Requirements

- Be a High School Junior or Senior
- Unweighted GPA of 2.8 OR Demonstrate College Readiness Approved Assessments in English, Reading, and Math

OR

- *Recommendation of High School Principal (Eligible to enroll in a CTE pathway **without** UGETC (Universal General Education Transfer Component) Courses [COMPREHENSIVE ARTICULATION AGREEMENT Transfer Course List UGETC - Indicates a Universal General Education Transfer Component Course](#)

**Recommendation of High School Principal on a case by case basis*

Freshman & Sophomore Curriculum CTE Pathways

- Recommendation from the high school principal
- “C” or better Math I, AND EOC score of 3, 4, or 5 for Math I
AND
- EOG score of 3, 4, or 5 for 8th Grade ELA Assessment

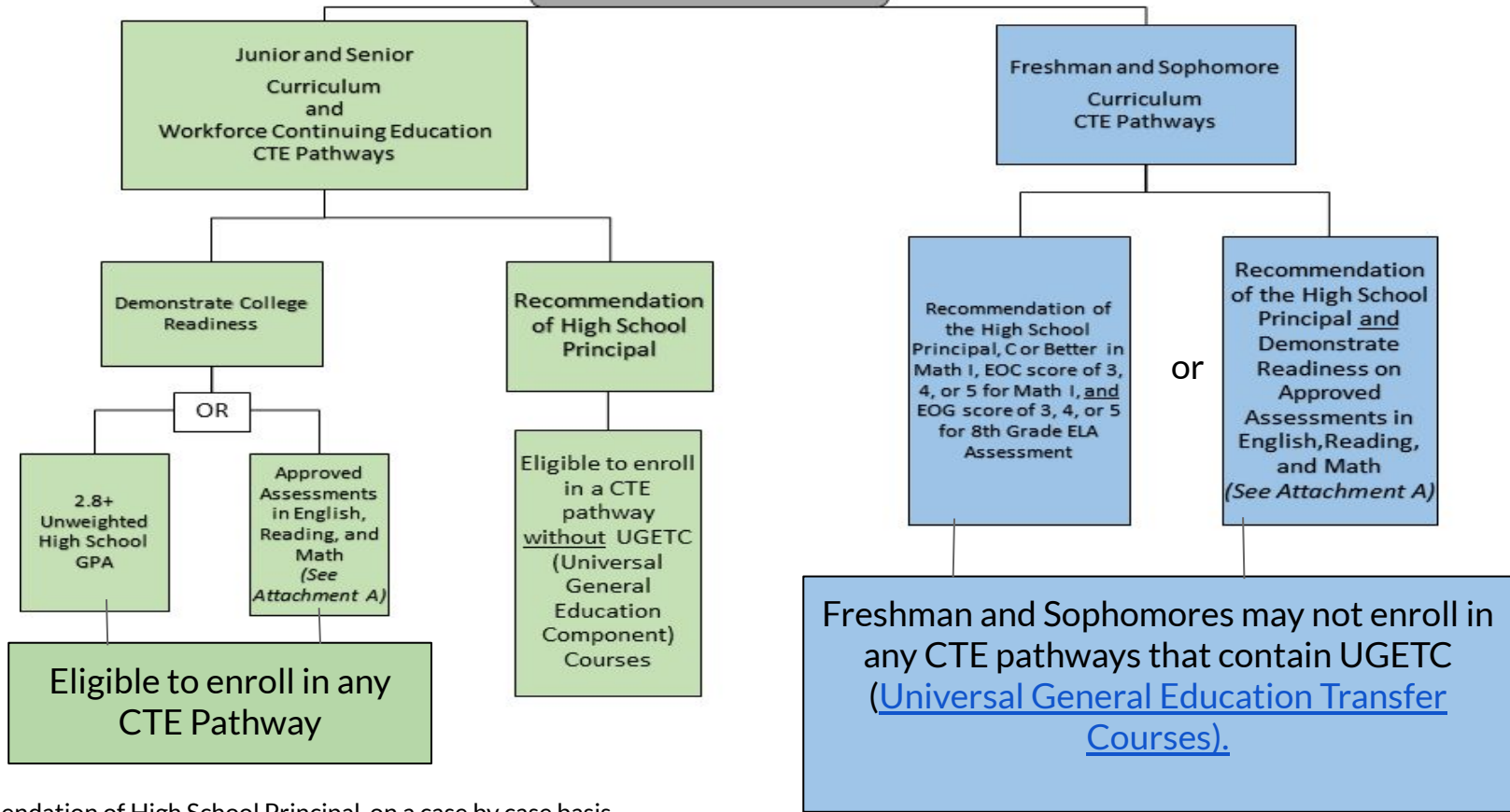
OR

Recommendation of the High School Principal and Demonstrate Readiness on Approved Assessments in English, Reading, and Math

Name: _____
Unweighted GPA: _____

CCP CTE Pathway Eligibility

<https://www.johnstoncc.edu/programs/career-and-college-promise/>



Recommendation of High School Principal on a case by case basis

CTE Pathways

CCP College Transfer/CTE Pathways

*Students requiring a Principal Recommendation may not enroll in any CTE pathway with UGETC (Universal General Education Transfer Component) Courses

Students Can Earn...

- Certificate - Credentials for work
- Diploma - Year's worth of college
- Associate's Degree - Two year program of study

Certificate  **Diploma**  **Degree**

CCP Program Requirements

- CCP provides structured opportunities for “qualified” high school students to “dually” enroll in community college courses that provide pathways that lead to a certificate, diploma, degree, or State industry-recognized credential...
- Students must continue to make progress toward high school graduation
 - take one course on the high school campus
- Students must maintain a 2.0 GPA in JCC classes (or be placed on academic probation/warning)
- Students must only enroll in courses in selected pathway

CCP Program Expectations

- Students who enroll in a JCC classes offered at a high school are encouraged not to drop classes after the first day of class
- Students follow JCC attendance policy for all JCC classes (impact of WF or WD for students) - **there are no excused absences**
- Grades are reported on a high school transcript
- Parents do not contact JCC instructors ([FERPA - Release of Student Information](#))

Application Process

Successful CCP applicants must follow instructions and submit all components of the JCC

**Enrollment for Sum/Fall 2020 - Application Packets are due on or by
Wednesday, March 11, 2020**

Click on link below and click on "Apply to CCP"

<http://www.johnstoncc.edu/programs/career-and-college-promise/>

JCC Application Packet

- Students must complete and submit a JCC Application Packet by **March 11, 2020** to be considered for Sum/Fall 2020 enrollment
- Students who do not meet this deadline will not be considered for Sum/Fall 2020 enrollment

JCC Application Packet

- [JCC Application](#) (submitted to Admissions Office)
- JCC Application Confirmation Page (signed by student/parent)
- Student Eligibility form (submitted via online form)
- Transcripts and Test Scores (*Transcripts must include grade level **AND** the unweighted high school GPA)
- Homeschool Name and Identification Number (Homeschool students only)
- If required, Recommendation of the High School Principal

Signature of CCP Representative (Homeschool Students, Private School Students, Students Outside of Johnston County Only).

*The total number of credits on the high school transcript **does not replace** the requirement of the student's grade level to be listed on the high school transcript. Additional high school transcripts must be provided to the college to verify the student is still enrolled in high school and making progress towards high school graduation for each term they are enrolled in CCP.

Apply Now

**Application Packet
Submission Deadline is
March 11, 2020**

Students must submit a JCC application, and return the Application Agreement Statement (signed by both the parent/student) before scheduling a meeting the a CCP School Representative

Click on link below and click on “Apply to CCP”

<http://www.johnstoncc.edu/programs/career-and-college-promise/>

Application Process Behind the Scenes

- Application packets are collected, reviewed and submitted to the Admissions Office
- Admissions representatives process the application packet and upon acceptance, send students an acceptance letter, a New Student Checklist, and instructions for accessing and logging into JCC Technology System. **All students must schedule and attend an Advising and Registration appointment.**
- EVERY STUDENT is expected to complete an online CCP Connect Session.
- Student and Parent MUST sign a Memorandum of Understanding (MOU)

Frequently Asked Questions

1. [Which college classes will transfer?](#)
2. How do I register for a college class?
3. Am I eligible for CCP if I have a 504 or EC plan?
4. How many JCC classes can a student take?
5. How do the grades that students receive in the college courses count in their high school GPA?
6. Can students take courses in the summer?
7. Once registered, can students drop a class?
8. What is the difference between AP & CCP?

Frequently Asked Answers

1. The classes in bold are guaranteed to transfer to a public institution in North Carolina, if student earns a C or better.
2. During Advising and Registration in April (Spring) and November (Fall).
3. Students are eligible if they meet the requirements. Johnston Community College is committed to providing an accessible college experience to all students. For more information, please visit the JCC Disability Services Webpage.
<https://www.johnstoncc.edu/studentresources/disability-services/>
4. Students should consider work, social, family commitments during registration.
5. Courses of three and four credit hours will continue to receive one high school dual credit. The revised Course for Credit policy states that college and university courses of one and two credit hours will no longer receive high school dual credit but will continue to receive college credit. This change will only impact the high school transcript. The college transcript will continue to be the official record for the college.

Frequently Asked Answers

6. Can students take courses in the summer? Yes, but it depends. Current Sophomores in the College Transfer Pathway are not eligible to take summer classes.
7. Yes, it depends. students can drop a class after registration, however students that drop classes after attending class need to be aware that a number of WDs may impact eligibility for financial aid. Students will be billed for CAPS fees for classes dropped after the first day of college classes.
8. What is the difference between AP & CCP? See the next slide.

Academic course levels for students entering 2015-16 and beyond

	A	B	C	D	F
Standard	4	3	2	1	0
Honors (1/2 point)	4.5	3.5	2.5	1.5	0
AP (1 point) CCP- College Transfer ONLY* (1 point) IB (1 point except for Ab Initio)	5	4	3	2	0

Academic course levels for students entering 2015-16 and beyond

*College Transfer courses are updated every 2 years and can be found at
<https://www.nccommunitycolleges.edu/academic-programs/college-transferarticulation-agreements/comprehensive-articulation-agreement-caa>

What's New

- JCC courses will be offered at the Cleveland Center
- New CCP Guaranteed Online Program - students must enroll in and pass ACA 122 to be considered for this program.

CCP for Success

- CCP is an “Interdependent Process”
- Select a **Pathway** based upon your future career and/or college goals - *CCP is focused on Pathway selection NOT Course Selection*
- We suggest you do your research **before** you select a pathway. Does your pathway align with your future career and/or college goals.
- CCP is about “Personal Management” such as checking and reading your email, asking questions, use a planner system, etc.
- CCP is about Personal Responsibility/Commitment - you are ultimately responsible for your success in this program.

Important Websites

[Agree 2 Degree - Stay the Course](#)

[Goodnight Scholarships](#)

[Program/School Comparison](#)

[CCP Website](#)

[NC College and University Information \(JCC CAP\)](#)

CCP Resources/Information

[JCC Honors Experience](#)

[College & Career Promise Website](#)

[DPI Resources \(dual credit info\)](#)

[NC Community College System Resources \(CCP Reference Manual\)](#)

[Comprehensive Articulation Agreement](#)

[NC College & University Information - Transfer Student Success Website](#)

CCP Contact Information

Career and College Promise Program

CCP Center (A117 Elsee Building), ccp@mail.johnstoncc.edu, 919.209.2034

JCC CCP Team: ccp@mail.johnstoncc.edu (main email contact for JCC-CCP Team)

Dr. Evelyn Kelly: EEKelly@johnstoncc.edu

Roxanna McGraw: RSMcGraw@johnstoncc.edu

Barretta Haynes: BarrettaHaynes@johnston.k12.nc.us

Becky Russell BeckyRussell@johnston.k12.nc.us

Suzanne Lujan: SuzanneLujan@johnston.k12.nc.us

Jaymie Yarbro: JDYarbro@johnstoncc.edu

CCP Student Resources

[Academic Enrichment Services](#)

[Academic Skills Center](#)

[Online Academic Resources](#)

[Writing Studio](#)